



pan-Canadian Patient Summary

PS-CA Interoperability Specifications

Version: 2.0.0

Type: Draft

Release Date: October 15, 2024



Table of Contents

1	Introduction	4
2	Intended Audience	5
3	Purpose.....	6
4	Glossary of Terms and Acronyms.....	7
5	Preface.....	16
5.1	High-Level PS-CA Release Roadmap.....	16
5.2	PS-CA v2.0.0 Overview	17
5.3	Context	18
5.4	Introduction to IHE	18
5.5	How to Read This Document.....	19
5.6	Related Documents & References	19
5.6.1	PS-CA Specifications Package	21
5.7	Document Conventions	21
5.8	Requirements Language.....	21
5.9	Methodology	21
5.10	Introduction to a Use-Case Driven Approach	22
5.11	Release Cycle.....	22
6	PS-CA Use Case Overview	23
6.1	PS-CA Use Case Overview	23
6.2	Design Constraints & Assumptions	24
7	Core Interoperability Specification Requirements	26
7.1	Actor Mapping to Interoperability Specification	26
7.2	Conformance Requirements for UC-01: HCP Creates a PS-CA.....	26
7.2.1	Table 1.1 Interoperability Conformance Requirements for Use Case 1: HCP Creates PS-CA.....	26
7.2.2	Table 1.2 Interoperability Conformance Requirements for Use Case 1: HCP Creates PS-CA.....	28
7.3	Conformance Requirements for UC-02: HCP Views/Consumes a PS-CA.....	29
7.3.1	Table 2.1 Interoperability Conformance Requirements for Use Case 2: HCP Views/ Consumes PS-CA	29
7.3.2	Table 2.2 Interoperability Conformance Requirements for Use Case 2: HCP Views/ Consumes PS-CA	31
7.4	Conformance Requirements for UC-03: Patient Views/Consumes a PS-CA.....	33

7.4.1	Table 3.1 Interoperability Conformance Requirements for Use Case 3: Patient Views/Consumes PS-CA.....	33
7.4.2	Table 3.2 Interoperability Conformance Requirements for Use Case 3: Patient Views/Consumes PS-CA.....	35
7.5	Conformance Requirements for UC-04: HCP Requests PS-CA On Demand	37
7.5.1	Table 4.1 Interoperability Conformance Requirements for Use Case 4: HCP Requests PS-CA On Demand	37
7.5.2	Table 4.2 Interoperability Conformance Requirements for Use Case 4: HCP Requests PS-CA On Demand	39
7.6	Conformance Requirements for UC-05: Patient Mediated Access and Exchange of their Patient Summary	42
7.6.1	Table 5.1 Interoperability Conformance Requirements for Use Case 5: Patient Mediated Access and Exchange of their Patient Summary	42
7.6.2	Table 5.2 Interoperability Conformance Requirements for Use Case 5: Patient Mediated Access and Exchange of their Patient Summary	44
8	PS-CA Actor Conformance	47
8.1	OpenAPI Specification	47
8.2	Constraints on PS-CA Use Case Actors Using Two Implementation Patterns	47
8.3	Option 1 - Document Repository/Registry Pattern Using MHD Profile	47
8.3.1	Constraints on PS-CA Use Case Actors: Option 1 - Document Repository/Registry Pattern Using MHD Profile.	47
8.3.2	Save PS-CA to Document Repository	48
8.3.3	Retrieve PS-CA from Document Repository.....	48
8.4	Option 2 - FHIR Health Information Exchange (HIE) Pattern Using CA:FeX	54
8.4.1	Constraints on PS-CA Use Case Actors: Option 2 - FHIR Health Information Exchange (HIE) Pattern Using CA:FeX.....	54
9	Privacy & Security Guidance.....	59
9.1	Privacy Considerations	59
9.2	Security Considerations.....	59
10	Information Models, Application, and Infrastructure	60
11	PS-CA Content Data Model & FHIR® Profiles	63

1 Introduction

The *pan-Canadian Patient Summary Interoperability Specification* is an implementable, testable specification, based on the IHE International Patient Summary (IPS) specification and the HL7 IPS Implementation Guide. It defines building blocks to create and share condition-independent and specialty-agnostic patient summaries, irrespective of the condition of the patient or the treatment sought or specialty of the provider delivering care. PS-CA building blocks are configurable to address necessary Canadian jurisdictional variances. A patient summary is a health record extract, at a point in time, comprised of a standardized collection of clinical and contextual information (retrospective, concurrent, prospective), including the minimum necessary and sufficient data to inform a patient's treatment at the point of care.

The PS-CA specifications, written in line with international best practices, contain the information necessary for an implementer to consume and develop the components necessary for creating, consuming and sharing a Patient Summary and may be applied to existing and new information systems.

2 Intended Audience

The intended audience of this document includes but is not limited to:

- Those interested in integrating healthcare information systems and workflows
- IT departments of healthcare institutions
- Technical staff of vendors participating in the IHE initiative
- Experts involved in standards development
- Software developers

3 Purpose

The purpose of this document is to address the following functionality:

- Describe the PS-CA use cases, including scenarios, use case diagrams and textual descriptions for each.
- Provide a detailed set of requirements (including Actors, Transactions and References to specific profiles and standards).
- Describe the implementation patterns that enable the exchange of the PS-CA.
- Describe the set of requirements that complement the set of IHE Profiles, pan-Canadian Interoperability Specifications (e.g. CA:FeX), and HL7 FHIR® Profiles required by the PS-CA specifications with Canadian-specific constraints.

4 Glossary of Terms and Acronyms

The following table provides a list of terms and acronyms that you may encounter throughout the pan-Canadian interoperability specifications (e.g. PS-CA, CA:FeX) and/or in the prototyping and validation information.

Term / Acronym	Meaning
ATNA	The Audit Trail and Node Authentication (ATNA) Profile specifies the foundational elements needed by all forms of secure systems: node authentication, user authentication, event logging (audit), and telecommunications encryption. It is also used to indicate that other internal security properties such as access control, configuration control, and privilege restrictions are provided. (Source: https://profiles.ihe.net/ITI/TF/Volume1/ch-9.html)
Author (e.g., PS-CA Author)	A health care provider who authors and/or curates clinical data (e.g. Patient Summary).
Business/Legal Interoperability Requirements	Requirements that enable independent organizations to execute a collaborative process or service.
Business Requirements: Non-Testable	Business requirements that are not directly traceable to an IHE profile in the PS-CA specifications (e.g., provided for consideration and to support and provide guidance to implementers of the PS-CA).
Business Requirements: Testable	Business requirements that are directly traceable to an IHE profile in the PS-CA specifications.
CA:FeX	The CA:FeX Interoperability Specifications (Canadian FHIR Exchange (CA:FeX)) seek to promote FHIR RESTful exchange patterns, developed by industry-leading FHIR standards that can be applied on top of an existing non-FHIR infrastructure just as easily as it can be applied on top of FHIR servers.
CA:FMT	Canadian Formatting Service (CA:FMT) is a Canadian Integration Specification that provides formatting support service. It provides support for transformation of documents between different formats (e.g. from FHIR to PDF, CDA, etc.).
CCDD	The Canadian Clinical Drug Data Set (CCDD) is the drug terminology for use in digital health solutions such as electronic prescribing in Canada.
Central Infrastructure	A Central Infrastructure collects health information from participating organizations and stores the information in a centralized place. The Infrastructure also provides access control. Typically, the Central Infrastructure is under jurisdictional control.

Term / Acronym	Meaning
Clinical Data Repository (Local or Central)	A Clinical Data Repository (i.e., document repository) is a shared storage space for clinical documents that can be hosted locally (e.g., at the data producer) or at the Central Infrastructure and can be accessed by authorized users.
Clinical Solution	Any combination of health information technology assets and processes that enables clinical data to be communicated, managed, and dispositioned between a Producer and a Consumer. Clinical Solutions can be comprised of various Producer and Consumer systems including: EMR, HIS, CIS, PHR, EHR or any combination of these systems.
Conformance Testing	Conformance testing is a formal process of assessment focused on ensuring clinical solutions and systems accurately implement a particular specification (e.g. PS-CA Specifications) by ensuring there is conformance to the stated parameters that are being claimed in the standard.
Consumer (e.g., PS-CA Consumer)	A health records system (e.g., EMR, HIS, CIS, PHR, Patient Portal or EHR) that enables access to or receipt of a clinical document (e.g. PS-CA) by an authorized health care provider or the subject of care/patient.
Cross Border, Scheduled Care	Scheduled care of a resident of Canada that is delivered in/by another country.
Cross Border, Unscheduled Care	Unscheduled care of a resident of Canada that is delivered in/by another country.
CT	The Consistent Time Integration Profile (CT) provides a means to ensure that the system clocks and time stamps of the many computers in a network are well synchronized. This profile specifies synchronization with a median error less than 1 second. This is sufficient for most purposes. (Source: https://profiles.ihe.net/ITI/TF/Volume1/ch-7.html)
DIN	A Drug Identification Number (DIN) is a computer-generated eight digit number assigned by Health Canada to a drug product prior to being marketed in Canada.
Document Repository (Local or Central)	See Clinical Data Repository (Local or Central)
DPD	The Drug Product Database (DPD) is used to find drugs authorized for sale by Health Canada. The DPD is updated nightly and includes availability of the drug in Canada.

Term / Acronym	Meaning
Electronic Health Record (EHR)	<p>The EHR represents the Clinical Solution that contains a secure and private collection of a patient's health information in a digital format, which is shareable across different health care settings / clinical solutions that are integrated. The EHR facilitates better sharing and interpretation of health information among the health care professionals involved in the care of the patient. For example:</p> <ul style="list-style-type: none"> • CareConnect is British Columbia's secure, view-only EHR solution. It offers healthcare providers access to an integrated, provincial view of patient-centric information available 24/7 to support the delivery of patient care. • HEALTHe NL is the Newfoundland & Labrador provincial EHR. HEALTHe NL will provide more accurate and reliable data to support improved health care delivery, decision-making and policy and create improved accountability, stability and efficiency in the provincial health care system. • Netcare is Alberta's name for all the projects related to the provincial EHR - a secure and confidential electronic system of Alberta patients' health information: a single, comprehensive, and integrated patient record. • Other clinical systems: In some health authorities, other clinical systems may act as an EHR, holding the patient summary information.
Extensible PS-CA Dataset	<p>Extensible PS-CA Dataset: PS-CA content that can be extended for use in a PS-CA use case scenario that complements the primary PS-CA use cases.</p> <p>*Note: Extensible PS-CA Dataset refers to the addition of data domains such as Family History.</p>
FHIR® Repository	<p>A FHIR repository is a clinical data repository built around the HL7® FHIR® standard used for storing clinical data.</p>
Gazelle	<p>Gazelle is a suite of virtual tools, developed by IHE Europe used to support interoperability testing. Gazelle will allow jurisdictions and vendors an opportunity to validate the role they will be playing in an ecosystem and ensure they are able to satisfy the interoperability requirements. Gazelle offers several self-serve, self-test and innovation opportunities for jurisdictions and vendors to test their alignment to the represented integration profiles.</p>
HCP	<p>Health Care Provider</p>
Health Information Access Layer (HIAL)	<p>An interface specification for the EHR infostructure that defines service components, service roles, information model and messaging standards required for the exchange of EHR data and execution of interoperability profiles between EHR services.</p> <p>(Source:https://www.infoway-inforoute.ca/en/component/edocman/resources/technical-documents/391-ehrs-blueprint-v2-full ; Page.340)</p>

Term / Acronym	Meaning
Health Information Exchange (HIE)	<p>Electronic health information exchange (HIE) allows doctors, nurses, pharmacists, other health care providers and patients to appropriately access and securely share a patient's vital medical information electronically—improving the speed, quality, safety and cost of patient care.</p> <p>While electronic health information exchange cannot replace provider-patient communication, it can greatly improve the completeness of patients' records, (which can have a big effect on care), as past history, current medications and other information is jointly reviewed during visits.</p> <p>Appropriate, timely sharing of vital patient information can better inform decision making at the point of care and allow providers to avoid readmissions, avoid medication errors, improve diagnoses and decrease duplicate testing.</p> <p>(Source: https://www.healthit.gov/topic/health-it-and-health-information-exchange-basics/what-hie)</p>
Health Records System	<p>A health records system may include an electronic medical records system, a hospital information system, a clinical information system, an electronic health records system or a personal health records system. The term is broadly used to describe system actors that may produce and/or consume a PS-CA. Jurisdictional implementation patterns will determine which systems are used to create, access, consume and manage patient summaries.</p>
HIS	Health Information System
Health Level 7 (HL7®)	<p>Founded in 1987, HL7 is a not-for-profit standards developing organization dedicated to providing a comprehensive framework and related standards for the exchange, integration, sharing, and retrieval of electronic health information that supports clinical practice and the management, delivery and evaluation of health services.</p> <p>(Source: http://www.hl7.org/about/index.cfm?ref=nav)</p>
HL7® Fast Healthcare Interoperability Resources (FHIR®)	<p>Expected to be a next generation standards framework created by HL7. FHIR® combines the best features of HL7's Version 2, Version 3 and product lines while leveraging the latest web standards and applying a tight focus on implementability.</p> <p>(Source: http://www.hl7.org/implement/standards/fhir/)</p>
Information/Semantic Interoperability Requirements	<p>Requirements for syntax and semantics such that data exchanged between health record systems can be interpreted and the meaning of the data ascertained.</p>

Term / Acronym	Meaning
Integrating the Healthcare Enterprise (IHE)	<p>IHE is an initiative by healthcare professionals and industry to improve the way computer systems in healthcare share information. IHE promotes the coordinated use of established standards such as DICOM and HL7 to address specific clinical needs in support of optimal patient care. Systems developed in accordance with IHE communicate with one another better, are easier to implement, and enable care providers to use information more effectively.</p> <p>(Source: https://www.ihe.net/)</p>
IHE Actor	<p>IHE Actors are responsible for producing, managing and/or acting on information in the context of an IHE Profile (e.g., Primary Care Provider, EMR, EHR, etc.).</p> <p>(Source: https://wiki.ihe.net/index.php/Actors)</p>
IHE Domain	<p>IHE Domains are responsible for the development and maintenance of the IHE Technical Frameworks that document the Integration Profiles. Each Domain manages Integration Profiles in a particular part of healthcare (e.g., Virtual Care).</p> <p>(Source: https://wiki.ihe.net/index.php/Domains)</p>
IHE Integration Profiles	<p>IHE Integration Profiles provide a solution to the interoperability challenges which have arisen in daily clinical work, as described in the Use Cases. Integration Profiles include detailed technical specifications for the use and implementation of relevant standards thus ensuring an uninterrupted flow of information between different healthcare IT applications in support of the specific use case.</p> <p>The Profiles describe how healthcare IT systems can provide integrated support for a clearly defined workflow, each of which individually supports a clinical task within a specific clinical domain. IHE Profiles can be used for a step-by-step implementation of systems in different domains and the gradual building of interoperable eHealth applications.</p> <p>(Source: https://www.ihe-europe.net/about-us/faq)</p>
IHE Transactions	<p>IHE Transactions are interactions between actors that communicate the required information through standards-based messages (e.g., patient look-up query, send patient summary information, etc.).</p> <p>(Source: https://wiki.ihe.net/index.php/PCC_TF-1/About)</p>
International Patient Summary (IPS)	<p>The IPS is a minimal, non-exhaustive set of data elements defined by ISO/EN 17269 and realized by HL7 in both CDA and FHIR. The IPS is a snapshot clinical document that can be used for planned or unplanned care of a person locally or across borders. It emphasizes the data required and the necessary conformance of the use cases for an international patient summary.</p> <p>(Source: https://wiki.ihe.net/index.php/International_Patient_Summary_(IPS))</p>

Term / Acronym	Meaning
Interoperability	<p>Interoperability enables information to flow seamlessly between different solutions and devices. When different parts of the health system are interoperable with each other, they can “speak the same language.” Interoperability improves continuity of care, collaboration between health providers and patient access to their health information. By breaking down data silos, it also reduces inefficiencies and redundancies within the health system.</p> <p>Connection, collaboration and communication have never been more important for the health system. Increased use of virtual care has highlighted the need for safe and efficient electronic sharing of information across the circle of care. Continuing to improve Canadian health care will necessitate work in interoperability — connected systems are healthier systems.</p> <p>For more information about interoperability, please visit Canada Health Infoway - Interoperability.</p>
IUA	<p>The Internet User Authorization (IUA) Profile provides support for authorizing network transactions when using HTTP RESTful transports. IHE has authorization profiles for the Web Services and SOAP based transactions, and this profile provides an authorization profile for the HTTP RESTful transactions.</p> <p>(Source: https://profiles.ihe.net/ITI/TF/Volume1/ch-34.html)</p>
Local, Scheduled Care	<p>Scheduled care of a resident of Canada that is delivered in/by the Canadian health care system. This includes care provided in federal, provincial and territorial jurisdictions, as well as cross-jurisdictional care.</p>
Local, Unscheduled Care	<p>Unscheduled care of a resident of Canada that is delivered in/by the Canadian health care system. This includes care provided in federal, provincial and territorial jurisdictions, as well as cross-jurisdictional care.</p>
Longitudinal Electronic Health Record	<p>A longitudinal electronic health record is a single comprehensive patient record comprised of data from numerous data sources across the healthcare continuum.</p>
Medical Home	<p>The College of Family Physicians of Canada describes the Medical Home as:</p> <p>"The Patient's Medical Home (PMH) is a family practice defined by its patients as the place they feel most comfortable—most at home—to present and discuss their personal and family health and medical concerns. It is the central hub for the timely provision and coordination of a comprehensive menu of health and medical services patients need."</p> <p>To read more about the Patient's Medical Home, please visit The College of Family Physicians of Canada's published document, A Vision for Canada - Family Practice - The Patient's Medical Home.</p>

Term / Acronym	Meaning
MHD	<p>The Mobile access to Health Documents (MHD) Profile defines one standardized interface to health document sharing (a.k.a. an Application Programming Interface (API)) for use by mobile devices so that deployment of mobile applications is more consistent and reusable.</p> <p>(Source: https://profiles.ihe.net/ITI/MHD/index.html)</p>
On-Demand	<p>Refers to the capability to generate a patient summary at the time it is requested. This means retrieving a patient's most current health data from available sources (e.g., CDR, EHR) when needed, ensuring timely access to information for clinical decision-making and patient care.</p>
Patient Portal	<p>A patient portal is a web-based access point that enables secure patient access to personal health information and other self-serve health IT services. For example, a patient portal can be hosted on an EMR solution.</p>
Patient Proxy	<p>An individual or entity that has the authority to act on behalf of a subject of care/patient. Proxies can include parents of dependent children, parents of dependent adults, powers of attorney, etc.</p>
Patient Summary-CA (PS-CA)	<p>An electronic patient summary for use at the point of care comprised of, at minimum, the required elements of the Patient Summary-CA data set and specifications. The PS-CA is a health record extract, at a snapshot in time, comprised of a standardized collection of clinical and contextual information (retrospective, concurrent, prospective), including the minimum necessary and sufficient data to inform a patient's treatment at the point of care. The PS-CA is condition-independent and specialty-agnostic, irrespective of the condition of the patient or the treatment sought or specialty of the provider delivering care.</p>
PDQm	<p>The Patient Demographics Query for Mobile (PDQm) Profile defines a lightweight RESTful interface to a patient demographics supplier leveraging technologies readily available to mobile applications and lightweight browser based applications.</p> <p>(Source: https://profiles.ihe.net/ITI/TF/Volume1/ch-38.html)</p>
PIXm	<p>The Patient Identifier Cross-reference for Mobile (PIXm) Profile provides RESTful transactions for mobile and lightweight browser-based applications to create, update and delete patient records in a Patient Identifier Cross-reference Manager and to query the Patient Identifier Cross-reference Manager for a patient's cross-domain identifiers.</p> <p>(Source: https://profiles.ihe.net/ITI/TF/Volume1/ch-41.html)</p>

Term / Acronym	Meaning
PMIR	<p>The Patient Master Identity Registry (PMIR) Profile supports the creating, updating and deprecating of patient master identity information about a subject of care, as well as subscribing to changes to the patient master identity, using the HL7 FHIR standard resources and RESTful transactions.</p> <p>(Source: https://www.ihe.net/uploadedFiles/Documents/ITI/IHE_ITI_Suppl_PMIR.pdf)</p>
Producer (e.g., PS-CA Producer)	<p>A health records system (e.g., EMR, HIS, CIS, PHR, or EHR) that creates/produces a clinical document (e.g. PS-CA) in response to a request from an authorized health care provider, the subject of care or another authorized health records system.</p>
Projectathon	<p>A Projectathon is an important step and a best-practice approach in testing and validation of a specification package, where implementers collaborate to test their solutions using methodology and tools that accelerate interoperability. A Projectathon provides an opportunity for participants to test their systems among themselves and against a reference environment. It is also an opportunity to collaborate among peers to enable hands-on knowledge exchange.</p>
PS-CA Solution	<p>Any combination of health information technology assets and processes that enables a Patient Summary-CA to be created, communicated, managed and dispositioned between a PS-CA Producer and a PS-CA Consumer. Patient Summary-CA Solutions can be comprised of various Producer and Consumer systems including: EMR, HIS, CIS, PHR, EHR or any combination of these systems.</p>
PS-CA Specifications	<p>pan-Canadian Patient Summary Interoperability Specifications: The pan-Canadian Patient Summary Interoperability Specification is an implementable, testable specification, based on the IHE International Patient Summary specification and the HL7 IPS Implementation Guide. For more information on the PS-CA Specifications, please go here.</p>
PT	<p>Provinces and Territories</p>
RA	<p>The Reference Architecture (RA) is intended as an evolving blueprint of service availability that supports a broader interoperability landscape, not limited to patient summaries. Its purpose is to facilitate multi-stakeholder dialogue, collaboration and convergence towards common, open standards. It is a conceptual technical view that provides a common vocabulary and a set of actors and transactions representing typical components in a digital health ecosystem (public and private sector solutions). It is combination of building blocks adopted from international standards development bodies and Canadian developed implementation patterns.</p>

Term / Acronym	Meaning
Shareable Health Link (SHL, SHLink)	<p>A secure, standardized link that enables patients to share their clinical health information (e.g., patient summaries) with healthcare providers. SHLs can be shared via QR codes or other secure electronic methods (e.g., email). SHLs are designed to facilitate the smooth exchange of health data, allowing information to travel with patients wherever they might be, supporting the continuity of care.</p> <p>SHL is based on HL7 SMART Health Links and generally can be used interchangeably.</p>
SUT	System Under Test
SVCN	<p>Sharing Valuesets, Codes and Maps (SVCN) defines a lightweight interface through which healthcare systems may retrieve centrally managed uniform nomenclature and mappings between code systems based on the HL7 Fast Healthcare Interoperability Resources (FHIR) specification.</p> <p>(Source: https://wiki.ihe.net/index.php/Sharing_Valuesets,_Codes_and_Maps_(SVCN))</p>
Technical Interoperability Requirements	Requirements for one health record system to send data to another health record system and for the receiving system to acknowledge receipt of the data payload.
Terminology	Collection of uniquely identifiable concepts with associated representations, designations, associations and meanings.
XDM	<p>Cross-Enterprise Document Media Interchange (XDM) provides document interchange using a common file and directory structure over several standard media types. This permits the patient to use physical media to carry medical documents. This also permits the use of person-to-person email to convey medical documents. XDM supports the transfer of data about multiple patients within one data exchange.</p> <p>(Source: https://profiles.ihe.net/ITI/TF/Volume1/ch-16.html)</p>
XDS	<p>The Cross-Enterprise Document Sharing (XDS) IHE Integration Profile facilitates the registration, distribution and access across health enterprises of patient electronic health records.</p> <p>(Source: https://profiles.ihe.net/ITI/TF/Volume1/ch-10.html)</p>

5 Preface

In support of the provinces and territories, Canada Health Infoway (Infoway) is facilitating a national collaborative effort to advance interoperability. While there are many interoperability-related challenges, these specifications address the challenge of sharing Patient Summaries as FHIR Documents.

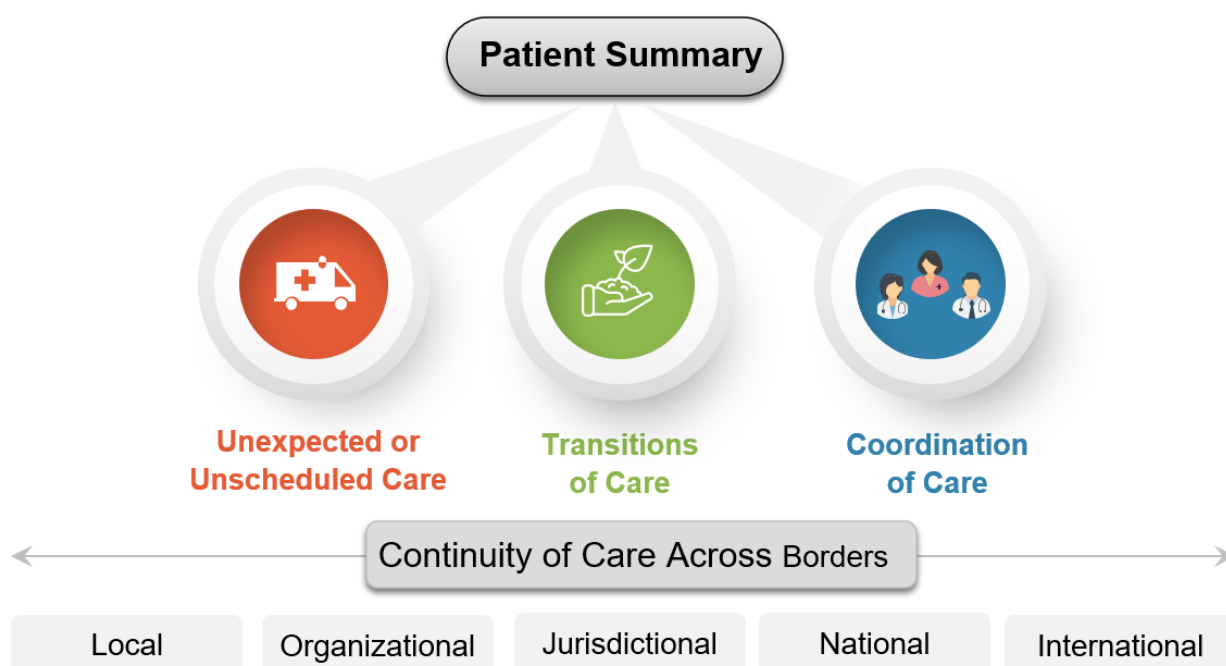
A Patient Summary (PS) is a health record comprising a standardized collection of clinical and contextual information (retrospective, concurrent, prospective) that provides a snapshot in time of a subject of care's health information and health care, while a longitudinal health record is a single comprehensive patient record comprised of data from numerous data sources across the health care continuum.

Canada is not alone in trying to solve for this challenge. The International Patient Summary (IPS) project started in Europe several years ago and has been adopted by ISO, IHE and HL7 International. In addition, there is an active working group led by the Office of the National Coordinator (ONC) in the United States called the Global Digital Health Partnership (GDHP) actively working with its members on solutions for Patient Summary exchanges at an international scale. Canada is an active participant in this partnership. At the G7 meeting in June 2021, Canada committed to work with jurisdictions, vendors, and participating organizations to collaborate on a pan-Canadian implementable specification that aligns to the IPS and reflects Canada's jurisdictional realities. The overarching principle adopted for the Patient Summary-CA (PS-CA) project is to align as closely as possible to the IPS profiles. This principle will support jurisdictions in representing their clinical workflows and will support implementers in undergoing the necessary change management efforts required to support adoption activities, ensuring this work effort is a worthwhile investment.

In October 2021, the CHIEF Executive Forum, an influential Digital Health Canada member group, published a white paper, [The Value of the International Patient Summary in Canada](#), providing an overview of IPS implementation globally, including lessons learned from other countries. Benefits and value to patients, clinicians, and the healthcare system are explored in the white paper and these lessons are translated into key themes for IPS in Canada, as well as a roadmap to successful implementation.

5.1 High-Level PS-CA Release Roadmap

The PS-CA Release Roadmap outlines a strategic progression from initial, limited product rollouts to a comprehensive implementation model capable of supporting international exchanges of Patient Summary information. The journey begins with the implementation of basic features for sharing local Patient Summaries derived from a single information source. As the roadmap evolves, it will expand to include capabilities for consolidating Patient Summary information from multiple sources into a unified Patient Summary. This consolidated Patient Summary will be designed for exchange both locally and across international partners. Throughout this process, the roadmap will incorporate additional content to address the needs of Canadian implementers while ensuring ongoing alignment with the IPS standards.



The Patient Summary will be instrumental in supporting patients and their health care providers in various critical scenarios. It will support care during unexpected or unscheduled situations, such as emergencies. Additionally, it will support transitions of care, ensuring the patient's most essential health care information is shared while moving between care settings - whether from a hospital to home or between health care providers. The Patient Summary will also enhance care coordination across multiple providers and services, ensuring that the patient's most important health care related information, such as medications they are taking, any allergies or intolerances they have and their key medical issues, are shared between providers.

5.2 PS-CA v2.0.0 Overview

PS-CA v2.0.0, is a major release reacting to jurisdictional needs, ensuring that the pan-Canadian Patient Summary specifications stay in alignment with the jurisdictional implementations. It includes support for sharing Patient Summaries for scheduled or unscheduled care with information from single and/or multiple sources.

This release focuses on five use cases that have been identified as priority by the participating Canadian jurisdictions (i.e., Alberta (AB), British Columbia (BC), Ontario (ON), Saskatchewan (SK), Newfoundland & Labrador (NL) and New Brunswick (NB)) and their supporting business requirements, actors and transactions, terminology and FHIR® profiles. The following figure represents the:

- alignment of the PS-CA to the IPS-UV. NOTE: The IPS v2.0, scheduled for release in fall 2024, will introduce two new data domains: Patient Story and Alerts. However, when the PS-CA v2.0.0 DFT-preBallot was published, these two data domains had not yet gone through the ballot process and were therefore not included in this version. They have since been added to the PS-CA roadmap.
- data domains of interest by the participating Canadian jurisdictions (including Manitoba (MB), according to their Home Clinic Client Summary Service). Note that although a PT may have identified interest in a particular data domain, they may choose to prioritize which data domains to include according to their individual Patient Summary roadmaps.
- data domains included in each PS-CA version.

IPS-UV		PS- CA							AB	BC	MB	NB	NL	ON	SK	v1.0.0 TI	v1.1.0 DFT	v2.0.0 DFT
Header	Subject	Header	Subject															
	Author		Author															
	Attester		Attester															
	Custodian		Custodian															
Required	Medication Summary	Recommended	Medication Summary															
	Allergies and Intolerances		Allergies and Intolerances															
	Problem List		Problem List															
Recommended	Immunizations	Recommended	Immunizations															
	History of Procedures		History of Procedures															
	Medical Devices		Medical Devices															
	Diagnostic Results		Diagnostic Results															
Optional	Vital Signs	Optional	Vital Signs															
	Past history of Illness		Past History of Illness															
	Social History		Social History															
	Advance Directives		Advance Directives															
	Pregnancy		Pregnancy															
	Functional Status		Functional Status															
	Plan of Care		Plan of Care															
		EXT	Extension(s)															
			Family History															

1 PS-CA: Data Domains of Interest by Canadian Jurisdiction and Release

Legend

- Blue: Header domains
- Red: Required domains
- Orange: Recommended domains
- Green: Optional domains
- Grey: Domains of interest by jurisdiction
- White: Domains not identified by jurisdictions as priority and/or not included in the PS-CA v1.0.0 TI or PS-CA v1.1.0 DFT releases

5.3 Context

The PS-CA specifications are published to a public space within Canada Health Infoway’s InfoScribe and are also available in downloadable PDF format. InfoScribe is a web-based tool developed for jurisdictions and vendors to create, publish, and collaborate on clinical requirements and specifications for interoperability solutions. Teams can document, share, and discuss content, files, ideas, specs, mock-ups, diagrams, and projects. A link to the online published content and the downloadable documentation will be published with each release of the PS-CA.

Release information for each release is contained in the corresponding [PS-CA Release page](#).

New content will be added throughout the life of the PS-CA Roadmap to accommodate the requirements of Canada's implementers.

5.4 Introduction to IHE

Integrating the Healthcare Enterprise (IHE) is an international initiative to promote the use of standards to achieve interoperability among health information technology (HIT) systems, and the effective use of electronic health records (EHRs). IHE provides a forum for care providers, HIT experts and other stakeholders in several clinical and operational domains to reach consensus on standards-based solutions to critical interoperability issues.

The primary output of IHE are system implementation guides, called IHE profiles. IHE publishes each profile through a well-defined process of public review and Trial Implementation, and gathers profiles that have reached Final Text status into an IHE Technical Framework. These profiles are referenced in the Appendices of this document.

Preference for Modern HL7 FHIR interfaces

New implementation of IHE profiles based on the PS-CA should avoid legacy interfaces. IHE profiles that are HL7 FHIR based are preferred when available; however, the Reference Architecture will account for legacy systems that do not support FHIR. Canada Health Infoway will encourage the adoption of modern exchange protocols but will also provide the runway and opportunity for the jurisdictions to improve their interoperability capabilities.

For implementation patterns pertaining to HL7 FHIR Health Information Exchange (HIE) patterns, a new pan-Canadian Interoperability Specifications document has been developed (i.e., CA:FeX). More information about CA:FeX can be found in the Companion Guide: Reference Architecture of the PS-CA specifications and also in the pan-Canadian Interoperability CA:FeX pages [here](#).

5.5 How to Read This Document

This document contains the following content, as well as informative appendices for your convenience.

- **Preface:** Contains an introduction to the pan-Canadian Patient Summary Interoperability Specifications. This section contains a summary of the context, document purpose and scope, as well as other content to help orient the first-time reader to the topic of these specifications and how they relate to other specifications in the digital health ecosystem in Canada.
- **PS-CA Use Case Overview:** Describes the Use Cases, including design constraints and assumptions and the flows of information that will be specified in the PS-CA specifications. This section also introduces scenarios that describe how the specified flows may be used in the Canadian context.
- **Core Interoperability Specifications:** Establishes the Core Interoperability Requirements for the PS-CA for two implementation options:
 - Document Repository/Registry Pattern (i.e., MHD - IHE Profile); and
 - FHIR Health Information Exchange (HIE) Pattern (i.e., CA:FeX).
- **PS-CA Actor Conformance:** Establishes the Conformance Requirements for the PS-CA specifications for the two implementation patterns identified above.
- **Privacy & Security Guidance:** Provides a reference to Infoway's recently published privacy primer, Privacy as an Enabler, that provides an introduction to interoperability, an overview of Canadian privacy laws and some practical approaches to privacy for interoperability. And, it provides a high-level list of security considerations for the PS-CA specifications.
- **Information Models, Applications and Infrastructure:** Provides key implementation guidance around Information Models, Applications and Infrastructure for the PS-CA specifications.
- **PS-CA Content Data Model & FHIR® Profiles:** Describes the required PS-CA Content Data Model & FHIR® Profiles.

5.6 Related Documents & References

The **pan-Canadian Patient Summary Interoperability Bundle** is the sole entry point for the technology developers, the compliance assessment testing and certification, and the purchasers of IT systems in terms of technical requirements.

The PS-CA specifications reference several supporting documents:

- **pan-Canadian Patient Summary – FHIR Implementation Guide**

The pan-Canadian Patient Summary - FHIR Implementation Guide is an implementable, testable specification for the HL7 FHIR composition that defines the data payload of the PS-CA specifications, based on the HL7® FHIR® IPS implementation guide. It contains information for solution developers to implement the PS-CA content data model using the HL7® Fast Healthcare Interoperability Resources (FHIR®) standard. It describes the data elements & types, cardinality, constraints, and code system references - all of the details needed for two systems to be semantically interoperable with each other when a PS-CA compliant patient summary is exchanged.

Target Audience: Solution Developers

- **pan-Canadian Patient Summary - Companion Guide to Use Cases & Definitions**

The pan-Canadian Patient Summary - Companion Guide to Use Cases & Definitions is a companion document to the pan-Canadian Patient Summary Interoperability Specifications that presents the broader context for clinical, business, interoperability and solution development considerations that were discovered during the development of the PS-CA. It defines the healthcare problem that the PS-CA addresses and includes healthcare use cases and interoperability requirements in terms that will be traceable to the content in the pan-Canadian Patient Summary - Companion Guide to Reference Architecture, which defines the actors and their interactions with other actors and the pan-Canadian Patient Summary – FHIR Implementation Guide, which defines the contents and semantic interoperability of the PS-CA.

This document will also support upcoming releases and roadmap elements of the PS-CA specifications.

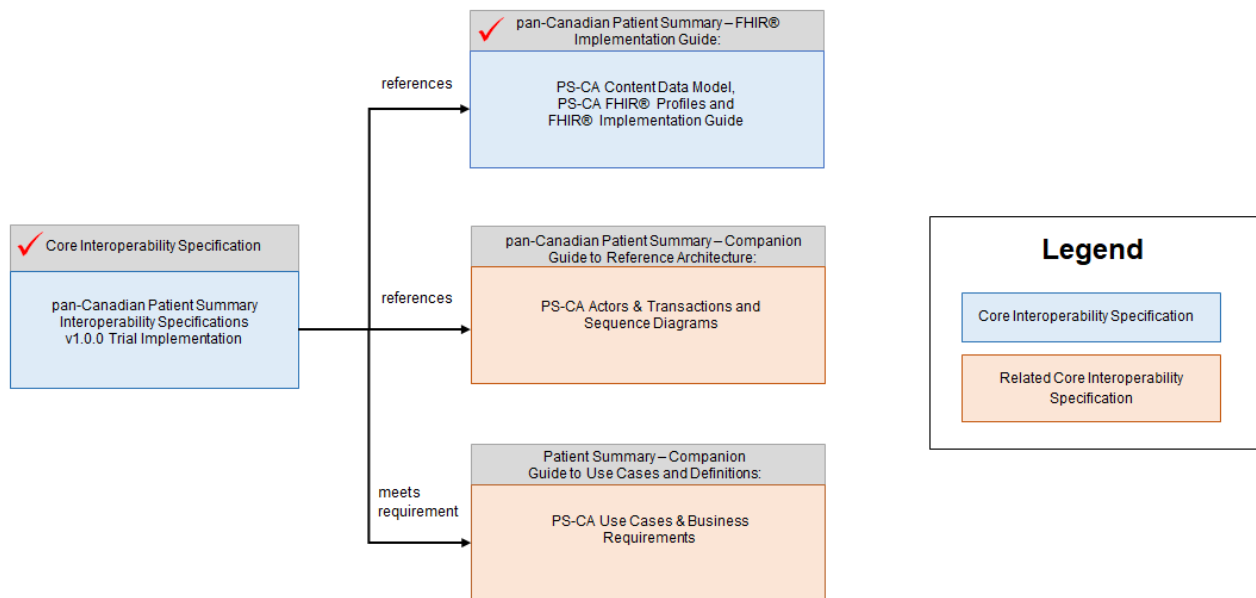
Target Audience: CTOs, CMIOs, CIOs, PTs, Health Care Providers and vendors

- **pan-Canadian Patient Summary - Companion Guide to Reference Architecture**

The pan-Canadian Patient Summary - Companion Guide to Reference Architecture contains background information on the abstracted PS-CA actors and transactions for the pan-Canadian Patient Summary Interoperability Specifications for stakeholders who are not familiar with the IHE Methodology. It describes baseline information on the recommended IHE profiles & pan-Canadian Interoperability Specifications and includes links to the Reference Architecture, available [here](#), where stakeholders can get additional details on each PS-CA actor and transaction. This document also includes descriptions of alternatives and choices for implementation patterns and ecosystem architectures to support the Patient Summary-CA in current state, including sequence diagrams that demonstrate the relationship and dependencies between the PS-CA actors and transactions.

Target Audience: CTOs, CMIOs, CIOs, PTs and vendors

5.6.1 PS-CA Specifications Package



5.7 Document Conventions

The pan-Canadian Patient Summary Interoperability Specifications will be versioned according to the IO Specifications Publication Model, defined [here](#).

5.8 Requirements Language

The following conventions are used to specify requirement levels for the business requirements within the specifications:

- **Shall:** used to indicate a **required** requirement.
- **Should:** used to indicate that a requirement is **recommended** and should be considered as best practice for implementation, but not required (i.e., it is optional) for implementation.
- **May:** used to indicate that a requirement is permissible / **optional**, but not required for implementation.
- **Shall not:** used to indicate that an element or action is prohibited.

Additional information on the PS-CA business requirements can be found in the Patient Summary – Companion Guide to Use Cases and Definitions.

5.9 Methodology

The Specifications have been co-developed with feedback and input from various jurisdictions and vendors collected during several months through Coordinating Table Meetings, Executive Table Meetings, stakeholder workshops and 1-on-1 meetings.

Stakeholders included clinicians, technical SMEs, and standards SMEs from participating jurisdictions (i.e., AB, ON, BC, SK, NL and NB), as well as vendors and software developers. The development of the PS-CA specifications rely on the business requirements set by the in-scope Use Cases of the PS-CA project. These high-level requirements are not restated in the specifications. Stakeholders should review the [Companion Guide: Use Cases and Definitions](#) for this information.

5.10 Introduction to a Use-Case Driven Approach

The following use case-driven approach was utilized in the development of the pan-Canadian Patient Summary Interoperability Specifications:

- **Baseline:** Develop foundational Use Cases, Use Case Scenarios and Business Requirements for pan-Canadian Patient Summaries based on information provided by jurisdictions
- **Collaborate:** Collaborate with jurisdictions, clinical SMEs, technical SMES, vendors, participating organizations to develop and refine detailed artefacts
- **Review:** Review and provide feedback into artefacts through engagement workshops and input gathering
- **Publish:** Publish artefacts for broader stakeholder consultation
- **Recommend:** Recommend draft artefacts for approval
- **Iterate:** Continue to refine as per testing and priorities

5.11 Release Cycle

The PS-CA specifications' release cycle includes a multi-stage review and feedback process. For more information, please visit the [pan-Canadian Interoperability PS-CA Release Information](#) page.

6 PS-CA Use Case Overview

6.1 PS-CA Use Case Overview

The scope for this release of the pan-Canadian Patient Summary – Interoperability Specifications have been defined to include use cases UC-01, UC-02, UC-03, UC-04, and UC-05.

The list below includes the use case's ID, name, description, and purpose. Participating Canadian jurisdictions have identified these use cases as applicable to their Patient Summary implementation for Release 1 or beyond.

Use Case ID	Use Case Name	Use Case Description	Purpose
UC-01	HCP Creates a PS-CA	A Health Care Provider (HCP) in any care setting creates a Patient Summary for use at point of care, which is made available to Patient Summary consumers.	To ensure that the most current patient information is available to other HCPs who may provide care in the future, supporting continuity of care and informed clinical decision-making. Provides the ability for a HCP to share the most current information about their patient in their health records system (e.g., EMR) to a central location, where other authorized HCPs can access the patient summary.
UC-02	HCP Views/ Consumes a PS-CA	A HCP in any care setting , views and uses a PS-CA at the point of care.	Provides the ability for authorized HCPs to request (i.e., query), retrieve and view an existing patient summary (e.g., PDF document) that has been stored in a central location (e.g., EHR).
UC-03	Patient Views/ Consumes a PS-CA	A Patient or Subject of Care accesses/views and can obtain a copy of their own PS-CA.	Provides the ability for patients to access and view their patient summary.

Use Case ID	Use Case Name	Use Case Description	Purpose
UC-04	HCP requests PS-CA on-demand	A HCP in any care setting requests a patient summary to be created at the time of the request (i.e., on-demand), consisting of the patient's most recent health information from an available data source(s) to be used at the point of care or as part of a clinical workflow.	Provides the ability for a HCP to generate a patient summary at the time it is requested. This means retrieving a patient's most current health data from available sources (i.e., CDR, EHR) when needed, ensuring timely access to information for clinical decision-making and patient care.
UC-05	Patient Mediated Access and Exchange of their Patient Summary.	A patient, via a patient-facing application, requests access to a shareable copy of their patient summary. Subsequently, the patient provides access to their encrypted patient summary via the QR code on their mobile device or by sharing a secure Verifiable Health Link (VHL), (e.g., via email) at the point of care (e.g., walk-in clinic, emergency department). The HCP scans the QR code or accesses the VHL shared by the patient, addressing any security prompts, such as entering a passcode if required, and then may proceed to view/utilize and consume the patient summary.	Provides the ability for a patient to request access to their Patient Summary for sharing with a health care provider using a QR code

The Use Case Actors and the Services that are used by this specification for sharing Patient Summaries are described at a functional level in the [Patient Summary – Companion Guide to Use Cases and Definitions](#). Stakeholders who wish to understand the mapping of Use Case Actors to business requirements and recommended IHE Profiles are recommended to read the pan-Canadian [Patient Summary – Companion Guide to Use Cases and Definitions](#) and the [pan-Canadian Patient Summary – Companion Guide to Reference Architecture](#).

6.2 Design Constraints & Assumptions

The following design constraints and assumptions exist for this release:

- All Use Case Actors/Users are logged in to the system. The Use Case Actors/Users are authenticated and appropriately authorized for all data exchange transactions.

- For specific Canadian implementation guidance on IHE profiles (e.g. IUA), refer to the [Reference Architecture](#).
- The implementation patterns in-scope will be based on the MHD IHE Profile or CA:FeX Interoperability Specifications that are being developed for FHIR Health Information Exchange (HIE) Pattern. Additional details about these profiles can be found in the pan-Canadian Patient Summary – Companion Guide to Reference Architecture.

Additional information on design constraints and assumptions can be found in the pan-Canadian Patient Summary – Companion Guide to Use Cases and Definitions.

7 Core Interoperability Specification Requirements

7.1 Actor Mapping to Interoperability Specification

The Use Case Actors and the Services they support are described at a functional level in the Patient Summary – Companion Guide to Use Cases and Definitions. Services may be Recommended or Optional. The Use Case Actors, Services and Optionality are conveyed in the first three columns of Tables 1 to 3 in the section below. The second part of the table (columns 4-6) provides the mapping of the Use Case Actor to the detailed specifications (such as IHE Profiles, Technical Actors, Optionality) that systems shall implement to exchange healthcare information in the context of these Use Cases. The purpose of the tables below is to map the use case actors to the technical actors and the services they are supporting. These tables are aligned with the flow captured in the sequence diagrams which are included in the Companion Guide: Reference Architecture section.

For a selected Use Case Actor (columns 1-3), the system shall implement all the requirements (some optionality when allowed) listed in the second part of the table (columns 4-6). This includes the referenced healthcare profiles, the standards specified and terminology standards. For Technical Actors, which map to IHE Profiles or pan-Canadian Interoperability Specifications (*MHD, PDQm, PMIR, CA:FeX, etc.*), refer to the Reference Architecture, [here](#). Additionally, there are two implementation options defined in this specification (MHD and CA:FeX), which may be used to solve for the use cases outlined in the tables below.

The following interoperability requirement tables are categorized by options for implementation patterns that jurisdictions may choose based on their maturity, capabilities and current state:

1. Document Repository/Registry Pattern using MHD
2. FHIR Health Information Exchange (HIE) Pattern using CA:FeX

Published Versions

This is an evolving specification, the release cycle assumes some degree of change will happen across versions. Versions of the artefacts that are employed by the PS-CA Specifications will be clearly defined and align to testing requirements. For information about the supported versions of the in scope IHE Profiles that have been referenced in this PS-CA Specification refer to the Reference Architecture [RA v0.2.0 DFT](#).

Legend

R = Required

O = Optional

7.2 Conformance Requirements for UC-01: HCP Creates a PS-CA

7.2.1 Table 1.1 Interoperability Conformance Requirements for Use Case 1: HCP Creates PS-CA

Note: For details about Profiles/Standards listed in the tables below, please refer to [Reference Architecture v0.2.0 DFT-Ballot](#) (RA) standards.

Option 1: Document Repository/Registry Pattern

PS-CA USE CASE 1: HCP Creates PS-CA			Mapping of Use Case Actor to Technical Actor and its related Profile or Standard		
USE CASE ACTOR	SERVICE SUPPORTED	OPT	TECHNICAL ACTOR	OPT	PROFILE / STANDARD
PS-CA Producer	Authenticate User	O	Client (e.g., EMR)	O	Internet User Authorization (IUA) -see RA specifications
	Identify Patient	O	Client (e.g., EMR)	O	Use Existing Standards Employed by the Clinical System
		O	Patient Demographic Consumer	O	PDQM -see RA specifications
	Retrieve clinical data from local data sources (Patient Identifier)	R	Client (e.g., EMR)	R	Use Existing Standards Employed by the Clinical System
	Assemble and review Patient Summary	R	Client (e.g., EMR)	R	Use Existing Standards Employed by the Clinical System
	Update Current Valuesets and ConceptMaps	O	Client (e.g., EMR)	O	SVCM -see RA specifications
	Omit or Mask Data based on Jurisdictional Policy	O	Client (e.g., EMR)	O	Jurisdictional Requirement
	Save PS-CA to Document Repository	R	Client (e.g., EMR)	R	Use Existing Standards Employed by the Clinical System
		R	Document Source	R	MHD -see RA specifications

PS-CA USE CASE 1: HCP Creates PS-CA			Mapping of Use Case Actor to Technical Actor and its related Profile or Standard		
USE CASE ACTOR	SERVICE SUPPORTED	OPT	TECHNICAL ACTOR	OPT	PROFILE / STANDARD
Document Repository (Local to PS-CA Producer or Central)	Save PS-CA to Document Repository	R	Document Recipient	R	MHD -see RA specifications
Central Infrastructure	Identify Patient	O	Patient Identity Registry	O	PMIR -see RA specifications

7.2.2 Table 1.2 Interoperability Conformance Requirements for Use Case 1: HCP Creates PS-CA

Note: For details about Profiles/Standards listed in the tables below, please refer to [Reference Architecture v0.2.0 DFT-Ballot](#) (RA) standards.

Option 2: FHIR Health Information Exchange (HIE) Pattern

PS-CA USE CASE 1: HCP Creates PS-CA			Mapping of Use Case Actor to Technical Actor and its related Profile or Standard		
USE CASE ACTOR	SERVICE SUPPORTED	OPT	TECHNICAL ACTOR	OPT	PROFILE / STANDARD
PS-CA Producer	Authenticate User	O	Client (e.g., EMR)	O	Internet User Authorization (IUA) -see RA specifications.
	Identify Patient	O	Client (e.g., EMR)	O	Use Existing Standards Employed by the Clinical System
		O	Patient Demographic Consumer	O	PDQM -see RA specifications

PS-CA USE CASE 1: HCP Creates PS-CA			Mapping of Use Case Actor to Technical Actor and its related Profile or Standard		
USE CASE ACTOR	SERVICE SUPPORTED	OPT	TECHNICAL ACTOR	OPT	PROFILE / STANDARD
	Retrieve clinical data from local data sources (Patient Identifier)	R	Client (e.g., EMR)	R	Use Existing Standards Employed by the Clinical System
	Assemble and review Patient Summary	R	Client (e.g., EMR)	R	Use Existing Standards Employed by the Clinical System
	Update Current Valuesets and ConceptMaps	O	Client (e.g., EMR)	O	SVCM -see RA specifications.
	Omit or Mask Data based on Jurisdictional Policy	O	Client (e.g., EMR)	O	Jurisdictional Requirement
	Save PS-CA to Document Repository	R	Client (e.g., EMR)	R	Use Existing Standards Employed by the Clinical System
R		Data Source	R	CA:FeX -see RA specifications	
Document Repository (Central)*	Save PS-CA to Document Repository	R	Data Recipient	R	CA:FeX -see RA specifications
Central Infrastructure	Identify Patient	O	Patient Identity Registry	O	PMIR -see RA specifications

*For Option 2, **Document Repository** use case actor is a logical role enacted by the Data Recipient which is described in detail in the 'Companion Guide: Reference Architecture'.

7.3 Conformance Requirements for UC-02: HCP Views/Consumes a PS-CA

7.3.1 Table 2.1 Interoperability Conformance Requirements for Use Case 2: HCP Views/ Consumes PS-CA

Note: For details about Profiles/Standards listed in the tables below, please refer to [Reference Architecture v0.2.0 DFT-Ballot](#) (RA) standards

Option 1: Document Repository/Registry Pattern

PS-CA USE CASE 2: HCP Views/ Consumes PS-CA			Mapping of Use Case Actor to Technical Actor and its related Profile or Standard		
USE CASE ACTORS	SERVICE SUPPORTED	OPT	TECHNICAL ACTOR	OPT	PROFILE / STANDARD
PS-CA Consumer	Authenticate User	O	Client (e.g., EMR)	O	Internet User Authorization (IUA) -see RA specifications.
	Identify Patient	O	Client (e.g., EMR)	O	Use Existing Standards Employed by the Clinical System
		O	Patient Demographic Consumer	O	PDQM -see RA specifications
	Request Patient Summary References (Patient Identifier)	R	Client (e.g., EMR)	R	Use Existing Standards Employed by the Clinical System
	Request Patient Summary (Patient Summary References)	R	Client (e.g., EMR)	R	Use Existing Standards Employed by the Clinical System
	Return Patient Summary References	R	Document Consumer	R	MHD -see RA specifications
	Return Patient Summary	R	Document Consumer	R	MHD -see RA specifications
	Perform transformation between different formats	O	Client (e.g., EMR)	O	Use Existing Standards Employed by the Clinical System (Render to Specific Format (PDF))

PS-CA USE CASE 2: HCP Views/ Consumes PS-CA			Mapping of Use Case Actor to Technical Actor and its related Profile or Standard		
USE CASE ACTORS	SERVICE SUPPORTED	OPT	TECHNICAL ACTOR	OPT	PROFILE / STANDARD
		O	Client (e.g., EMR)	O	CA:FMT (e.g., FHIR to CDA, Export to PDF, etc.) -see RA specifications
	Download/Print PS-CA	O	Client (e.g., EMR)	O	Use Existing Standards Employed by the Clinical System
	Update Current ValueSets and ConceptMaps	O	Client (e.g., EMR)	O	SVCM-see RA specifications
Document Repository (Local to PS-CA Producer or Central)	Retrieve PS-CA References from Document Repository	R	Document Responder	R	MHD -see RA specifications
	Retrieve PS-CA from Document Repository	R	Document Responder	R	MHD -see RA specifications
Central Infrastructure	Identify Patient	O	Patient Identity Registry	O	PMIR -see RA specifications

7.3.2 Table 2.2 Interoperability Conformance Requirements for Use Case 2: HCP Views/ Consumes PS-CA

Note: For details about Profiles/Standards listed in the tables below, please refer to [Reference Architecture v0.2.0 DFT-Ballot](#) (RA) standards

Option 2: FHIR Health Information Exchange (HIE) Pattern

PS-CA USE CASE 2: HCP Views/ Consumes PS-CA			Mapping of Use Case Actor to Technical Actor and its related Profile or Standard		
USE CASE ACTOR	SERVICE SUPPORTED	OPT	TECHNICAL ACTOR	OPT	PROFILE/ STANDARD
PS-CA Consumer	Authenticate User	O	Client (e.g., EMR)	O	Internet User Authorization (IUA) -see RA specifications.
	Identify Patient	O	Client (e.g., EMR)	O	Use Existing Standards Employed by the Clinical System
		O	Patient Demographic Consumer	O	PDQM -see RA specifications
	Request Search Patient Summary (Patient Identifier)	R	Client (e.g., EMR)	R	Use Existing Standards Employed by the Clinical System
	Request Patient Summary (Bundle ID)	R	Client (e.g., EMR)	R	Use Existing Standards Employed by the Clinical System
	Return Patient Summary Compositions	R	Data Consumer	R	CA:FeX -see RA specifications
	Return Patient Summary	R	Data Consumer	R	CA:FeX -see RA specifications
	Perform transformation between different formats	O	Client (e.g., EMR)	O	Use Existing Standards Employed by the Clinical System (Render to Specific Format (PDF))
		O	Client (e.g., EMR)	O	CA:FMT (e.g., FHIR to CDA, CDA to FHIR, Export to PDF, etc.) -see RA specifications
Download/Print PS-CA	O	Client (e.g., EMR)	O	Use Existing Standards Employed by the Clinical System	

PS-CA USE CASE 2: HCP Views/ Consumes PS-CA			Mapping of Use Case Actor to Technical Actor and its related Profile or Standard		
USE CASE ACTOR	SERVICE SUPPORTED	OPT	TECHNICAL ACTOR	OPT	PROFILE/ STANDARD
	Update Current ValueSets and ConceptMaps	O	Client (e.g., EMR)	O	SVCM-see RA specifications
Document Repository (Local to PS-CA Producer or Central)*	Retrieve Patient Summary Compositions From Document Repository	R	Data Responder	R	CA:FeX -see RA specifications
	Retrieve Patient Summary Bundle Document Repository	R	Data Responder	R	CA:FeX -see RA specifications
Central Infrastructure	Identify Patient	O	Patient Identity Registry	O	PMIR - see RA specifications

*For Option 2, **Document Repository** use case actor is a logical role enacted by the Data Recipient which is described in detail in the 'Companion Guide: Reference Architecture'.

7.4 Conformance Requirements for UC-03: Patient Views/Consumes a PS-CA

7.4.1 Table 3.1 Interoperability Conformance Requirements for Use Case 3: Patient Views/Consumes PS-CA

Note: For details about Profiles/Standards listed in the tables below, please refer to [Reference Architecture v0.2.0 DFT-Ballot](#) (RA) standards.

Option 1: Document Repository/Registry Pattern

PS-CA USE CASE 3: Patient Views/ Consumes PS-CA			Mapping of Use Case Actor to Technical Actor and its related Profile or Standard		
USE CASE ACTOR	SERVICE SUPPORTED	OPT	TECHNICAL ACTOR	OPT	PROFILE / STANDARD
Patient Portal	Authenticate User	O	Client App	O	Internet User Authorization (IUA) -see RA specifications
	Identify Patient	O	Client App	O	Use Existing Standards Employed by the Clinical System
		O	Patient Demographic Consumer	O	PDQM -see RA specifications
	Request Patient Summary References (Patient Identifier)	R	Client App	R	Use Existing Standards Employed by the Clinical System
	Request Patient Summary (Patient Summary References)	R	Client App	R	Use Existing Standards Employed by the Clinical System
	Return Patient Summary References	R	Document Consumer	R	MHD -see RA specifications
	Return Patient Summary	R	Document Consumer	R	MHD -see RA specifications
	Perform transformation between different formats	O	Client App	O	Use Existing Standards Employed by the Clinical System (Render to Specific Format (PDF))
		O	Client App	O	CA:FMT (e.g., FHIR to CDA, Export to PDF, etc.) -see RA specifications

PS-CA USE CASE 3: Patient Views/ Consumes PS-CA			Mapping of Use Case Actor to Technical Actor and its related Profile or Standard		
USE CASE ACTOR	SERVICE SUPPORTED	OPT	TECHNICAL ACTOR	OPT	PROFILE / STANDARD
	Download/Print PS-CA	O	Client App	O	Use Existing Standards Employed by the Clinical System
	Save to Portable Media	O	Client App	O	Use Existing Standards Employed by the Clinical System
		O	Portable Media Creator	O	XDM(Future scope)-see RA specifications
Document Repository (Local or Central)	Retrieve PS-CA References from Document Repository	R	Document Responder	R	MHD -see RA specifications
	Retrieve PS-CA from Document Repository	R	Document Responder	R	MHD -see RA specifications
Central Infrastructure	Identify Patient	O	Patient Identity Registry	O	PMIR -see RA specifications

7.4.2 Table 3.2 Interoperability Conformance Requirements for Use Case 3: Patient Views/Consumes PS-CA

Note: For details about Profiles/Standards listed in the tables below, please refer to [Reference Architecture v0.2.0 DFT-Ballot](#) (RA) standards.

Option 2: FHIR Health Information Exchange (HIE) Pattern

PS-CA USE CASE 3: Patient Views/ Consumes PS-CA			Mapping of Use Case Actor to Technical Actor and its related Profile or Standard		
USE CASE ACTOR	SERVICE SUPPORTED	OPT	TECHNICAL ACTOR	OPT	PROFILE / STANDARD
Patient Portal	Authenticate User	O	Client App	O	Internet User Authorization (IUA) -see RA specifications
	Identify Patient	O	Client App	O	Use Existing Standards Employed by the Clinical System
		O	Patient Demographic Consumer	O	PDQM -see RA specifications
	Request Search Patient Summary (Patient Identifier)	R	Client App	R	Use Existing Standards Employed by the Clinical System
	Request Patient Summary (Bundle ID)	R	Client App	R	Use Existing Standards Employed by the Clinical System
	Return Patient Summary Compositions	R	Data Consumer	R	CA:FeX -see RA specifications
	Return Patient Summary	R	Data Consumer	R	CA:FeX -see RA specifications
	Perform transformation between different formats	O	Client App	O	Use Existing Standards Employed by the Clinical System (Render to Specific Format (PDF))
		O	Client App	O	CA:FMT(e.g., FHIR to CDA, CDA to FHIR, Export to PDF, etc.)-see RA specifications

PS-CA USE CASE 3: Patient Views/ Consumes PS-CA			Mapping of Use Case Actor to Technical Actor and its related Profile or Standard		
USE CASE ACTOR	SERVICE SUPPORTED	OPT	TECHNICAL ACTOR	OPT	PROFILE / STANDARD
	Download/Print PS-CA	O	Client App	O	Use Existing Standards Employed by the Clinical System
	Save to Portable Media	O	Client App	O	Use Existing Standards Employed by the Clinical System
		O	Portable Media Creator	O	XDM(Future scope)-see RA specifications
Document Repository (Local or Central)*	Retrieve Patient Summary Compositions from Document Repository	R	Data Responder	R	CA:FeX -see RA specifications
	Retrieve Patient Summary Bundle from Document Repository	R	Data Responder	R	CA:FeX -see RA specifications
Central Infrastructure	Identify Patient	O	Patient Identity Registry	O	PMIR -see RA specifications

*For Option 2, **Document Repository** use case actor is a logical role enacted by the Data Recipient which is described in detail in the 'Companion Guide: Reference Architecture.'

7.5 Conformance Requirements for UC-04: HCP Requests PS-CA On Demand

7.5.1 Table 4.1 Interoperability Conformance Requirements for Use Case 4: HCP Requests PS-CA On Demand

Note: For details about Profiles/Standards listed in the tables below, please refer to [Reference Architecture v0.2.0 DFT-Ballot](#) (RA) standards.

Option 1: Clinical FHIR Data Sources are internal to the Clinical Data Repository

PS-CA USE CASE 4: HCP Requests PS-CA On Demand			Mapping of Use Case Actor to Technical Actor and its related Profile or Standard		
USE CASE ACTORS	SERVICE SUPPORTED	OPT	TECHNICAL ACTOR	OPT	PROFILE / STANDARD
PS-CA Consumer	Authenticate User	O	Client (e.g., EMR)	O	Internet User Authorization (IUA) -see RA specifications
	Identify Patient	O	Client (e.g., EMR)	O	Use Existing Standards Employed by the Clinical System
		O	Patient Demographic Consumer	O	PDQM -see RA specifications
	Request Patient Summary on-demand (Patient Identifier)	R	Client (e.g., EMR)	R	Use Existing Standards Employed by the Clinical System
	Request Patient Summary on-demand (Patient Identifier)	R	Data Consumer	R	CA:FeX (CA:FeX-3D with \$summary)-see RA specifications
	Return Patient Summary Document Bundle	R	Data Consumer	R	Use Existing Standards Employed by the Clinical System
	Perform transformation between different formats	O	Client (e.g., EMR)	O	Use Existing Standards Employed by the Clinical System (Render to Specific Format (PDF))
		O	Client (e.g., EMR)	O	CA:FMT(e.g., FHIR to CDA, Export to PDF, etc.) -see RA specifications
	Download/Print PS-CA	O	Client (e.g., EMR)	O	Use Existing Standards Employed by the Clinical System

PS-CA USE CASE 4: HCP Requests PS-CA On Demand			Mapping of Use Case Actor to Technical Actor and its related Profile or Standard		
USE CASE ACTORS	SERVICE SUPPORTED	OPT	TECHNICAL ACTOR	OPT	PROFILE / STANDARD
Clinical Data Repository (Local to PS-CA Producer or Central)	Retrieve patient FHIR data resources from internal data sources	R	Data Responder	R	Use Existing Standards Employed by the Clinical System
	Assemble Patient Summary from discrete FHIR resources	R	Data Responder	R	Use Existing Standards Employed by the Clinical System
	Return Patient Summary Document Bundle	R	Data Responder	R	CA:FeX(CA:FeX-3D with \$summary) -see RA specifications
Central Infrastructure	Identify Patient	O	Patient Identity Registry	O	PMIR -see RA specifications

7.5.2 Table 4.2 Interoperability Conformance Requirements for Use Case 4: HCP Requests PS-CA On Demand

Note: For details about Profiles/Standards listed in the tables below, please refer to [Reference Architecture v0.2.0 DFT-Ballot](#) (RA) standards.

Option 2: Clinical FHIR Data Sources are internal and/or external to the Clinical Data Repository

PS-CA USE CASE 4: HCP Requests PS-CA On Demand			Mapping of Use Case Actor to Technical Actor and its related Profile or Standard		
USE CASE ACTORS	SERVICE SUPPORTED	OPT	TECHNICAL ACTOR	OPT	PROFILE / STANDARD
PS-CA Consumer	Authenticate User	O	Client (e.g., EMR)	O	Internet User Authorization (IUA) -see RA specifications

PS-CA USE CASE 4: HCP Requests PS-CA On Demand			Mapping of Use Case Actor to Technical Actor and its related Profile or Standard		
USE CASE ACTORS	SERVICE SUPPORTED	OPT	TECHNICAL ACTOR	OPT	PROFILE / STANDARD
	Identify Patient	O	Client (e.g., EMR)	O	Use Existing Standards Employed by the Clinical System
		O	Patient Demographic Consumer	O	PDQM -see RA specifications
	Request Patient Summary on-demand Document Reference (Patient Identifier)	R	Client (e.g., EMR)	R	Use Existing Standards Employed by the Clinical System
	Request Patient Summary on-demand Document Reference (Patient Identifier)	R	Data Consumer	R	CA:FeX (CA:FeX-2B with \$docref) -see RA specifications
	Return Patient Summary Document Reference (include URL to Document Bundle)	R	Data Consumer	R	Use Existing Standards Employed by the Clinical System
	Request Patient Summary (Document Location/Bundle ID)	R	Client (e.g., EMR)	R	Use Existing Standards Employed by the Clinical System
	Request Patient Summary (Document Location/Bundle ID)	R	Data Consumer	R	CA:FeX (CA:FeX-3B)-see RA specifications
	Return Patient Summary Document Bundle	R	Data Consumer	R	Use Existing Standards Employed by the Clinical System

PS-CA USE CASE 4: HCP Requests PS-CA On Demand			Mapping of Use Case Actor to Technical Actor and its related Profile or Standard		
USE CASE ACTORS	SERVICE SUPPORTED	OPT	TECHNICAL ACTOR	OPT	PROFILE / STANDARD
	Perform transformation between different formats	O	Client (e.g., EMR)	O	Use Existing Standards Employed by the Clinical System (Render to Specific Format (PDF))
		O	Client (e.g., EMR)	O	CA:FMT (e.g., FHIR to CDA, Export to PDF, etc.)-see RA specifications
	Download/Print PS-CA	O	Client (e.g., EMR)	O	Use Existing Standards Employed by the Clinical System
Clinical Data Repository (Local to PS-CA Producer or Central)	Retrieve patient FHIR data resources from internal and/or external data sources [Sync or Async]	R	Data Responder	R	Use Existing Standards Employed by the Clinical System
	Assemble Patient Summary when FHIR resource data is retrieval is complete [Sync or Async]	R	Data Responder	R	Use Existing Standards Employed by the Clinical System
	Generate Patient Summary Document Reference (include URL where Document Bundle is or will be available)	R	Data Responder	R	Use Existing Standards Employed by the Clinical System
	Return Patient Summary on-demand Document Reference (include URL to Document Bundle)	R	Data Responder	R	CA:FeX (CA:FeX-2B with \$docref)-see RA specifications

PS-CA USE CASE 4: HCP Requests PS-CA On Demand			Mapping of Use Case Actor to Technical Actor and its related Profile or Standard		
USE CASE ACTORS	SERVICE SUPPORTED	OPT	TECHNICAL ACTOR	OPT	PROFILE / STANDARD
	Return Patient Summary Document Bundle	R	Data Responder	R	CA:FeX (CA:FeX-3B)--see RA specifications
Central Infrastructure	Identify Patient	O	Patient Identity Registry	O	PMIR -see RA specifications

7.6 Conformance Requirements for UC-05: Patient Mediated Access and Exchange of their Patient Summary

7.6.1 Table 5.1 Interoperability Conformance Requirements for Use Case 5: Patient Mediated Access and Exchange of their Patient Summary

Note: For details about Profiles/Standards listed in the tables below, please refer to [Reference Architecture v0.2.0 DFT-Ballot](#) (RA) standards

Part A: Patient Requests Access to Their Shareable Patient Summary

PS-CA USE CASE 5 Part A: Patient Requests Access to Their Shareable Patient Summary			Mapping of Use Case Actor to Technical Actor and its related Profile or Standard		
USE CASE ACTORS	SERVICE SUPPORTED	OPT	TECHNICAL ACTOR	OPT	PROFILE / STANDARD
Patient-facing Application (e.g. Patient Portal or Mobile App)	Authenticate User	O	Client App	O	Internet User Authorization (IUA) -see RA specifications
	Identify Patient	O	Client App	O	Use Existing Standards Employed by the Clinical System
		O	Patient Demographic Consumer	O	PDQM -see RA specifications

PS-CA USE CASE 5 Part A: Patient Requests Access to Their Shareable Patient Summary			Mapping of Use Case Actor to Technical Actor and its related Profile or Standard		
USE CASE ACTORS	SERVICE SUPPORTED	OPT	TECHNICAL ACTOR	OPT	PROFILE / STANDARD
	Request Generate SHLink (Patient Identifier, passcode)	R	Client App	R	Use Existing Standards Employed by the Clinical System
	Request Generate SHLink (Patient Identifier, passcode)	R	SHLink Requester	R	CA:SHL Generate SHLink [CA:SHL-1]
	Return Patient Summary SHLink	O	SHLink Requester	O	Use Existing Standards Employed by the Clinical System
	Generate QR Code	O	SHLink Requester	O	Use Existing Standards Employed by the Clinical System
	Return QR Code	O	SHLink Requester	O	Use Existing Standards Employed by the Clinical System
	Download/Save QR Code to Phone/ Media	R	Client App	R	Use Existing Standards Employed by the Clinical System
Clinical Data Repository (Local to PS-CA Producer or Central)	Generate SHLink artifacts (manifest URL, encrypt/ decrypt key, etc.)	R	SHLink Creator	R	CA:SHL
	Generate SHLink (with optional viewer URL)	R	SHLink Creator		CA:SHL
	Return Patient Summary SHLink	R	SHLink Creator	R	CA:SHL Generate SHLink [CA:SHL-1]

PS-CA USE CASE 5 Part A: Patient Requests Access to Their Shareable Patient Summary			Mapping of Use Case Actor to Technical Actor and its related Profile or Standard		
USE CASE ACTORS	SERVICE SUPPORTED	OPT	TECHNICAL ACTOR	OPT	PROFILE / STANDARD
Central Infrastructure	Identify Patient	O	Patient Identity Registry	O	PMIR -see RA specifications

7.6.2 Table 5.2 Interoperability Conformance Requirements for Use Case 5: Patient Mediated Access and Exchange of their Patient Summary

Note: For details about Profiles/Standards listed in the tables below, please refer to [Reference Architecture v0.2.0 DFT-Ballot](#) (RA) standards

Part B: Patient presents their QR code or SHL to HCP for access to their Patient Summary

PS-CA USE CASE 5 Part B: Patient presents their QR code or SHL to HCP for access to their Patient Summary			Mapping of Use Case Actor to Technical Actor and its related Profile or Standard		
USE CASE ACTORS	SERVICE SUPPORTED	OPT	TECHNICAL ACTOR	OPT	PROFILE / STANDARD
PS-CA Consumer	Authenticate User	O	Client App	O	Internet User Authorization (IUA) -see RA specifications
	Identify Patient	O	Client App	O	Use Existing Standards Employed by the Clinical System
		O	Patient Demographic Consumer	O	PDQM -see RA specifications
	Scan QR Code	O	Client (e.g., EMR)	O	Use Existing Standards Employed by the Clinical System

PS-CA USE CASE 5 Part B: Patient presents their QR code or SHL to HCP for access to their Patient Summary			Mapping of Use Case Actor to Technical Actor and its related Profile or Standard		
USE CASE ACTORS	SERVICE SUPPORTED	OPT	TECHNICAL ACTOR	OPT	PROFILE / STANDARD
	Request retrieve SHLink data [recipient, passcode]	R	Client (e.g., EMR)	R	Use Existing Standards Employed by the Clinical System
	Decode SHLink	R	SHLink Consumer	R	Use Existing Standards Employed by the Clinical System
	Request retrieve SHLink manifest [recipient, passcode]	R	SHLink Consumer	R	CA:SHL Retrieve SHLink Manifest [CA:SHL-2]
	Request retrieve PS-CA				CA:SHL Retrieve SHLink Clinical Data [CA:SHL-3]
	Decrypt PS-CA data	R	SHLink Consumer	R	Use Existing Standards Employed by the Clinical System
	Return PS-CA data	R	SHLink Consumer	R	Use Existing Standards Employed by the Clinical System
	Access SHLink viewer URL	O	Client App	O	Use Existing Standards Employed by the Clinical System
	Display PS-CA and/or related data	O	Client App	O	Use Existing Standards Employed by the Clinical System

PS-CA USE CASE 5 Part B: Patient presents their QR code or SHL to HCP for access to their Patient Summary			Mapping of Use Case Actor to Technical Actor and its related Profile or Standard		
USE CASE ACTORS	SERVICE SUPPORTED	OPT	TECHNICAL ACTOR	OPT	PROFILE / STANDARD
Clinical Data Repository (Local to PS-CA Producer or Central)	Generate SHLink Manifest with updated PS-CA location	R	SHLink Responder	R	Use Existing Standards Employed by the Clinical System
	Return SHLink manifest	R	SHLink Responder	R	CA:SHL Retrieve SHLink Manifest [CA:SHL-2]
	Retrieve PS-CA referenced in Manifest	R	SHLink Responder	R	Use Existing Standards Employed by the Clinical System
	Return PS-CA Document Bundle	R	SHLink Responder	R	CA:SHL Retrieve SHLink Clinical Data [CA:SHL-3]
	Return PS-CA and/or related data	O	Clinical Solution	O	Use Existing Standards Employed by the Clinical System
Central Infrastructure	Identify Patient	O	Patient Identity Registry	O	PMIR -see RA specifications

8 PS-CA Actor Conformance

A system conforming to this Core Interoperability Specification shall claim conformance at the level of a Use Case Actor (first columns of [Tables 1.1, 1.2, 2.1, 2.2, 3.1 and 3.2](#)). A system may claim conformance to one or more Use Case Actors among:

- PS-CA Producer
- PS-CA Consumer
- Document Repository (Local or Central)
- Central Infrastructure
- Patient Portal

PS-CA Producer and PS-CA Consumer use case actor roles will primarily be taken up by EMR clinical solution vendors. Document Repository and Central Infrastructure use case actor roles can be taken up either by EMR clinical solution vendors or jurisdictions depending on the implementation approach that the jurisdiction decides to adopt. Similarly, the Patient Portal use case actor can be taken up either by a vendor or jurisdiction depending on the approach and policies defined regarding patient/subject-of-care access to their patient summary.

In order to implement a system that fully supports the pan-Canadian Patient Summary Interoperability Specifications, the system shall be able to claim conformance to 'Required' services and it's associated requirements as defined in [Core Interoperability Specification Requirements](#).

8.1 OpenAPI Specification

It is recommended to use the OpenAPI UI to access the interactive API documentation. The API allows developers to test API calls directly in the browser. There are two APIs:

- OpenAPI for MHD: available [here](#)
- Open API for CA:FeX: available [here](#)

8.2 Constraints on PS-CA Use Case Actors Using Two Implementation Patterns

The pages that follow will describe the constraints on PS-CA Use Case Actors for two implementation patterns below:

1. [Option 1 - Document Repository/Registry Pattern Using MHD Profile](#)
2. [Option 2 - FHIR Health Information Exchange \(HIE\) Pattern Using CA:FeX](#)

8.3 Option 1 - Document Repository/Registry Pattern Using MHD Profile

8.3.1 Constraints on PS-CA Use Case Actors: Option 1 - Document Repository/Registry Pattern Using MHD Profile

There are some design constraints on use case actors when developing functionality to support the services mapped to those Use Case Actors.

Note: The scope of this section is limited to the constraints that are applicable to IHE MHD profile actors and transactions. The two key services supported by the IHE MHD Profile are:

- Save PS-CA to Document Repository
- Retrieve PS-CA from Document Repository

This section provides key design constraints for implementation of these two required services using IHE methodology and FHIR standards.

8.3.2 Save PS-CA to Document Repository

The *Save PS-CA to Document Repository* service shall be implemented using PS-CA Producer and Document Repository Use Case Actors.

These actors shall use the IHE Transaction **Provide Document Bundle [ITI-65]** of the MHD profile that passes a *Provide Document Bundle Request* from a Document Source to a Document Recipient.

Provide Document Bundle [ITI-65]

This message uses the HTTP POST method on the target Provide Document Bundle endpoint to convey the metadata and the document(s) as a FHIR transaction.

Trigger Events

This method is invoked when the Document Source needs to submit one or more documents to a Document Recipient.

Message Semantics

The Document Source shall initiate a FHIR “transaction” using a “create” action by sending an **HTTP POST** request method composed of a FHIR Bundle Resource. The media type of the HTTP body shall be either **application/fhir+json** or **application/fhir+xml**.

Expected Actions

The Document Recipient shall accept both media types **application/fhir+json** and **application/fhir+xml**. On receipt of the submission, the Document Recipient shall validate the resources and respond with one of the HTTP codes defined in the response Message Semantics.

Refer to the [Provide Document Bundle \[ITI-65\]](#) transaction details page for additional information.

8.3.3 Retrieve PS-CA from Document Repository

The *Retrieve PS-CA from Document Repository* service shall be implemented using the PS-CA Consumer and Document Repository Use Case Actors.

These actors shall use the following IHE Transactions of the MHD profile to find document references, document lists and retrieval of an identified Patient Summary document:

- **Find Document Lists [ITI-66]**
- **Find Document References [ITI-67]**

- **Retrieve Document [ITI-68]**

Find Document List [ITI-66]

This message uses the search method parameterized query to obtain List Resources from the Document Responder.

Trigger Events

When the Document Consumer needs to discover List Resources matching various metadata parameters it issues a Find Document Lists message.

Message Semantics

The Document Consumer executes an HTTP search against the Document Responder List endpoint. The search target follows the FHIR HTTP specification, addressing the List Resource <http://hl7.org/fhir/R4/http.html>:

[\[base\]/List?<query>](#)

This URL is configurable by the Document Responder and is subject to the following constraints:

- The **<query>** represents a series of encoded name-value pairs representing the filter for the query as well as control parameters to modify the behavior of the Document Responder such as response format, or pagination.
- The Document Consumer may use GET or POST based searches. The Document Responder shall support both GET and POST based searches <http://hl7.org/fhir/R4/http.html#search>.

Query Search Parameters

The Document Consumer may supply, and the Document Responder shall be capable of processing all query parameters listed below. All query parameter values shall be appropriately encoded per RFC3986 “percent” encoding rules. Note that percent encoding does restrict the character set to a subset of ASCII characters which is used for encoding all other characters used in the URL.

- The Document Consumer shall include search parameters **patient** or **patient.identifier**, **code**, and **status**. The other parameters described below are optional.
- The Document Responder shall implement the parameters described below. The Document Responder may choose to support additional query parameters beyond the subset listed below. Any additional query parameters supported shall be supported according to the core FHIR specification. Such additional parameters are considered out of scope for this transaction. Any additional parameters not supported should be ignored and shall not cause a failure.

Query Search Parameters	Description
code	This parameter, of type token, specifies the code.coding value supplied in the List Resource. The value of the code element indicates the List of type SubmissionSet or Folder as indicated.
date	This parameter, of type date, specifies the time when the List was created. See FHIR http://hl7.org/fhir/R4/search.html#date for use of the date search type.

Query Search Parameters	Description						
designationType	This IHE extension on parameters defined as List-DesignationType, of type token, specifies the designation type of the List. The value of the designation type element expresses contentType of submissionSet or the codeList of a Folder. It is usually expressed in LOINC or SNOMED CT. Note that servers that do not support this extended search parameter will ignore it, and thus return more results than expected.						
identifier	This parameter, of type token, specifies an identifier for this List. The search results represent the results of a search on List.masterIdentifier and List.identifier. See ITI TF-2x: Appendix Z.2 for additional constraints on the use of the token search parameter type.						
patient	This parameter is of type Reference(Patient). The Document Consumer may get this reference through the use of the PDQm or PIXm Profiles, or by some other method. When the patient parameter is used, the Patient reference would need to be accessible to both the Document Consumer and the Document Responder.						
patient.identifier	This parameter, of type token, specifies an identifier associated with the patient to which the List Resource is assigned. This use of patient.identifier follows the FHIR Chaining Parameters search methodology.						
source.given and source.family	These parameters, of type string, specify the name parts of the author person which is associated with the List. This use of source.given and source.family follows the FHIR Chaining Parameters search methodology.						
sourceId	This IHE extension on parameters defined as List-SourceId, of type reference, specifies the source (author) value supplied in the List Resource.						
status	<p>This parameter, of type token, specifies the status of the List. If included in the query, the Document Consumer shall populate the code portion of the token with one of the codes in the below table for status of List. The system portion of the token shall not be populated.</p> <table border="1"> <thead> <tr> <th>Code</th> <th>ebRIM Code</th> </tr> </thead> <tbody> <tr> <td>Current</td> <td>urn:oasis:names:tc:ebxml-regrep:StatusType:Approved</td> </tr> <tr> <td>Superseded</td> <td>urn:oasis:names:tc:ebxml-regrep:StatusType:Deprecated</td> </tr> </tbody> </table>	Code	ebRIM Code	Current	urn:oasis:names:tc:ebxml-regrep:StatusType:Approved	Superseded	urn:oasis:names:tc:ebxml-regrep:StatusType:Deprecated
Code	ebRIM Code						
Current	urn:oasis:names:tc:ebxml-regrep:StatusType:Approved						
Superseded	urn:oasis:names:tc:ebxml-regrep:StatusType:Deprecated						

Expected Actions

The Document Responder shall process the query to discover the List entries that match the search parameters given.

Refer to the [Find Document Lists \[ITI-66\]](#) transaction details page for additional information.

Find Document References [ITI-67]

This message uses the search method parameterized query to obtain DocumentReference Resources from the Document Responder.

Trigger Events

When the Document Consumer needs to discover DocumentReference Resources matching various metadata parameters, it issues a Find Document References message.

Message Semantics

The Document Consumer executes an HTTP search against the Document Responder's DocumentReference URL. The search target follows the FHIR HTTP specification, addressing the DocumentReference Resource <http://hl7.org/fhir/R4/http.html>:

[base]/DocumentReference?<query>

This URL is configurable by the Document Responder and is subject to the following constraints:

- The *<query>* represents a series of encoded name-value pairs representing the filter for the query, as specified in Section Query Search Parameters, as well as control parameters to modify the behavior of the Document Responder such as response format, or pagination.
- The Document Consumer may use GET or POST based searches. The Document Responder shall support both GET and POST based searches <http://hl7.org/fhir/R4/http.html#search>.

Query Search Parameters

The Document Consumer may supply, and the Document Responder shall be capable of processing, all query parameters listed below. All query parameter values shall be appropriately encoded per RFC3986 “percent” encoding rules. Note that percent encoding does restrict the character set to a subset of ASCII characters which is used for encoding all other characters used in the URL.

- The Document Consumer shall include search parameters *patient* or *patient.identifier*, and *status*. The other parameters described below are optional.
- The Document Responder must implement the parameters described below. The Document Responder may choose to support additional query parameters beyond the subset listed below. Any additional query parameters supported shall be supported according to the core FHIR specification. Such additional parameters are considered out of scope for this transaction. Any additional parameters not supported should be ignored and shall not cause a failure.

Query Search Parameters	Description
author.given and author.family	These parameters, of type string, specify the name parts of the author person, which is associated with the DocumentReference Resource, or in Document Sharing nomenclature, the author of the Document Entry. This use of author.given and author.family follows the FHIR Chaining Parameters search methodology.
category	This parameter, of type token, specifies the general classification of the DocumentReference Resource, or in Document Sharing nomenclature, the classCode of the Document Entry.

Query Search Parameters	Description
creation	This IHE defined parameter defined as DocumentReference-Creation, of type dateTime, specifies a search against the DocumentReference.content.attachment.creation. See FHIR http://hl7.org/fhir/R4/search.html#date for use of the date search type.
date	This parameter, of type date, specifies the time when the DocumentReference was created. See FHIR http://hl7.org/fhir/R4/search.html#date for use of the date search type.
event	This parameter, of type token, specifies the main clinical acts documented by the DocumentReference Resource, or in Document Sharing nomenclature, the eventCodeList of the Document Entry.
facility	This parameter, of type token, specifies the kind of facility found in DocumentReference.context.facilityType, or in Document Sharing nomenclature, the healthcareFacilityTypeCode of the Document Entry.
format	This parameter, of type token, specifies the format of the DocumentReference Resource, or in Document Sharing nomenclature, the formatCode of the Document Entry.
identifier	This parameter, of type token, specifies an identifier for this DocumentReference and/or the contained document. The search results represent the results of a search on DocumentReference.masterIdentifier and DocumentReference.identifier.
patient	This parameter is of type Reference(Patient). The Document Consumer may get this reference using the PDQm or PIXm Profile. When the patient parameter is used, the Patient reference would need to be accessible to both the Document Consumer and the Document Responder.
patient.identifier	This parameter, of type token, specifies an identifier associated with the patient to which the DocumentReference Resource is assigned. This use of patient.identifier follows the FHIR Chaining Parameters search methodology.
period	This parameter, of type date, represents the time of service that is being documented by the DocumentReference. The period search parameter specifies an interval which the time of service overlaps. In Document Sharing nomenclature, this query parameter represents from/to parameters for the serviceStartTime and serviceStopTime of the Document Entry. See FHIR http://hl7.org/fhir/R4/search.html#date for use of the date search type.
related	This parameter, of type reference, represents other identifiers associated with the DocumentReference Resource, or in Document Sharing nomenclature, the referenceIdList of the Document Entry.

Query Search Parameters	Description						
security-label	This parameter, of type token, specifies the security labels of the document referenced by the DocumentReference Resource, or in Document Sharing nomenclature, the confidentialityCode of the Document Entry.						
setting	This parameter, of type token, specifies the specific practice setting of the DocumentReference Resource, or in Document Sharing nomenclature, the practiceSettingCode of the Document Entry.						
status	<p>This parameter, of type token, specifies the status of the DocumentReference Resource, or in Document Sharing nomenclature, the availabilityStatus of the Document Entry. The Document Consumer shall populate the identifier portion of the token using one of the FHIR Codes in below table. The system portion of the token shall not be populated.</p> <table border="1"> <thead> <tr> <th>FHIR Code</th> <th>eBRIM Code</th> </tr> </thead> <tbody> <tr> <td>Current</td> <td>urn:oasis:names:tc:ebxml-regrep:StatusType:Approved</td> </tr> <tr> <td>Superseded</td> <td>urn:oasis:names:tc:ebxml-regrep:StatusType:Deprecated</td> </tr> </tbody> </table>	FHIR Code	eBRIM Code	Current	urn:oasis:names:tc:ebxml-regrep:StatusType:Approved	Superseded	urn:oasis:names:tc:ebxml-regrep:StatusType:Deprecated
FHIR Code	eBRIM Code						
Current	urn:oasis:names:tc:ebxml-regrep:StatusType:Approved						
Superseded	urn:oasis:names:tc:ebxml-regrep:StatusType:Deprecated						
type	This parameter, of type token, specifies the specific type of the DocumentReference resource or in Document Sharing nomenclature, the typeCode of the Document Entry. See ITI TF-2x: Appendix Z.2 for additional constraints on the use of the token search parameter type.						

Expected Actions

The Document Responder shall process the query to discover the DocumentReference entries that match the search parameters given.

Refer to the [Find Document References \[ITI-67\]](#) transaction details page for additional information including the **Find Document References Response Message**.

Retrieve Document [ITI-68]

This transaction is used by the Document Consumer to retrieve a document from the Document Responder.

Trigger Events

The Document Consumer wants to obtain a document.

Message Semantics

The Document Consumer sends an HTTP GET request to the server. The Document Consumer request may be to retrieve the document content referenced by a DocumentReference.content.attachment.url.

The Document Consumer may provide an HTTP Accept header, according to the semantics of the HTTP protocols. This enables the Document Consumer to indicate preferred mime-types such that the Document Responder could provide the document requested in an encoding other than the encoding indicated in the DocumentReference. For example, indicating `application/fhir+json` could result in the response from the Document Responder being a JSON FHIR Bundle of type `document` with all the content encoded as FHIR resources.

The only MIME type assured to be returned is the MIME type indicated in the `DocumentReference.content.attachment.contentType`.

The HTTP If-Unmodified-Since header shall not be included in the GET request.

Expected Actions

The Document Responder shall provide the document in the requested MIME type or reply with an HTTP status code indicating the error condition. The Document Responder is not required to transform the document.

Refer to the [Retrieve Document \[ITI-68\]](#) transaction details page for additional information including the **Retrieve Document Response Message**.

8.4 Option 2 - FHIR Health Information Exchange (HIE) Pattern Using CA:FeX

8.4.1 Constraints on PS-CA Use Case Actors: Option 2 - FHIR Health Information Exchange (HIE) Pattern Using CA:FeX

The section below captures some of the design constraints on use case actors when developing functionality to support the services mapped to those Use Case Actors.

Note: The scope of this section is limited to the constraints that are applicable to actors and transactions defined in the CA:FeX Interoperability Specifications.

While global implementations are actively testing various ways to exchange patient summaries and other documents (See *Pan-Canadian FHIR Exchange (CA:FeX) Interoperability Specifications: Preface*), more sophisticated exchange patterns may not be as accessible for implementers in the current state. As such, PS-CA has identified the patterns in CA:FeX that early implementers are most likely to start with.

This implementation is currently constrained to only support FHIR-assembled documents in the form of a **Bundle** of resources of `type "document"` that has a **Composition** resource as the first resource in the bundle, followed by a series of other resources, referenced from the Composition resource, that provide supporting evidence for the document.

The two key services supported by CA:FeX are:

- Submit PS-CA to Document Repository
 - Submit FHIR Document [CA:FeX-1A]
- Retrieve PS-CA from Document Repository
 - Search FHIR Document [CA:FeX-2A]
 - Retrieve FHIR Document [CA:FeX-3A]

The following section provides key design constraints for implementation of these two required services using the CA:FeX Interoperability Specifications and FHIR standards.

Save PS-CA to Document Repository

PS-CA Producer attempts to save a PS-CA in the Document Repository. The PS-CA Producer implements the Data Source actor from the CA:FeX Interoperability Specifications by using the Save PS-CA to Document Repository service. Similarly, the Document Repository implements the Data Recipient actor from the CA:FeX Interoperability Specifications.

These actors shall use the transaction **Submit FHIR Document [CA:FeX-1A]** of CA:FeX that executes a *Submit Data Request* from a Data Source to a Data Recipient.

Note: Global, pan-Canadian, and jurisdictional practices for document lifecycle management of patient summaries are still in development. For this reason, the management, verification, replacement and deprecation of documents, are out of scope of the guidance included in this release but have been included in the roadmap for future releases. *This does not preclude or prevent early implementers from defining their document management practices and beginning to exercise them in their own specifications.*

Submit FHIR Document [CA:FeX-1A]

This message involves a request by a Data Source to transfer a PS-CA FHIR Document Bundle to a Data Recipient. The request is received by a Data Recipient which stores the received PS-CA document bundle and returns an HTTP response code.

Trigger Events

This method is invoked when the Data Source needs to submit a FHIR Document Bundle to a Data Recipient (Document Repository).

Message Semantics

This message uses the **HTTP POST** method on the target Submit Data endpoint to convey the metadata and the document(s) as a FHIR transaction. The Data Source shall initiate a FHIR “transaction” using a “create” action by sending an **HTTP POST** request method composed of a FHIR Bundle Resource (with type of document). The content type of the HTTP body shall be either application/fhir+json or application/fhir+xml.

Expected Actions

The Data Recipient shall accept both content types application/fhir+json and application/fhir+xml. On receipt of the submission, the Data Recipient shall validate the resources and respond with one of the HTTP response codes and an [OperationOutcome](#), if applicable. For additional information on HTTP response codes, refer to *Exchanging Documents in FHIR* in the [CA:FeX Specifications](#).

Retrieve PS-CA from Document Repository

The PS-CA Consumer and Document Repository (Central) Use Case Actors are required to implement the *Retrieve PS-CA from Document Repository* service.

These actors shall use the following transactions to find document metadata and retrieval of identified Patient Summary document:

- **Search FHIR Document [CA:FeX-2A]**
- **Retrieve FHIR Document [CA:FeX-3A]**

Search FHIR Document [CA:FeX-2A]

This message involves a query request by Data Consumer for PS-CA FHIR Document Bundle matching the search criteria included in the request. The request is received by Data Responder which returns a *searchset* Bundle containing the document(s) matching search parameters.

The Data Consumer may use HTTP GET or HTTP POST based searches. The Data Responder shall support both GET and POST based searches.

Trigger Events

When the Data Consumer needs to discover PS-CA FHIR Document Bundles in the Document Repository matching various parameters.

Message Semantics

The Data Consumer executes a **FHIR search request** against the Data Responder endpoint (FHIR Repository).

The Data Consumer may use **HTTP GET** or **HTTP POST** based searches. The Data Responder shall support both GET and POST based searches.

GET [base]/Bundle?composition

POST [base]/Bundle/_search{?&_format=[mime-type]}

Query Search Parameters

Search Document Bundle operation shall include the following search parameters:

Query Search Parameters	Description	Usage Note
timestamp (bundle.timestamp)	This parameter, of type date, specifies the timestamp when the FHIR bundle was created. See FHIR http://hl7.org/fhir/R4/search.html#date for use of the date search type.	Applied directly on Bundle, does not require chaining. Usage of prefix modifiers encouraged for targeted retrieval by date.
type (bundle.composition.type)	This parameter, of type token, specifies the kind of composition (LOINC if possible). The use of composition.type follows the FHIR Chaining Parameters search methodology.	Will be fixed to 60591-5 for patient summary.
status (bundle.composition.status)	This parameter, of type token, specifies the status of the composition. The use of bundle.composition.status follows the FHIR Chaining Parameters search methodology.	Helpful in differentiating compositions that are final vs other statuses. See IPS Note on Composition.status .
patient.identifier (bundle.composition.patient.identifier)	This parameter, of type token, specifies an identifier associated with the patient to which the FHIR bundle is assigned. This use of patient.identifier follows the FHIR Chaining Parameters search methodology.	Should include system and value to prevent improper retrieval of patient summaries.

Query Result Parameters

Search Document Bundle operation may include the following result parameters to help organize and manage the returned results. They are not required by the specification but are considered conditionally useful in environments where multiple patient summaries are expected to be returned for the subject of care.

Result Parameters	Description
_sort	This parameter is used to indicate the sort rules (both priority elements and sort direction). Can be applied using comma-separated lists of rules. See Sorting for more details on its use.
_count	This parameter is used to minimize the number of results that are returned in a single page of the response bundle. See Page Count for more details on its use.

Note: The combination of `_sort` and `_count` can be used to return only the latest resource that meets a particular criteria - set the criteria, and then sort by date in descending order, with `_count=1`. This way, the last matching resource will be returned.

Example Search Queries

Search by Type of Patient Summary

Note: This is the base that is recommended for all searches for patient summaries to build on. This type is shared by IPS and national implementations of the Patient Summary and therefore will return any patient summaries for the subject of care.

GET [base]/Bundle?composition.type=60591-5

Search by Type + Patient Identifier

GET [base]/Bundle?composition.type=60595-1&composition.patient.identifier=[system]][value]

Search by Type + Date with qualifier

GET [base]/Bundle?composition.type=60591-5&date=gt2021-01-01

Search by Type + Status

GET [base]/Bundle?composition.type=60591-5&status=final

Expected Actions

The Data Responder shall process the query and return a search result Bundle matching the search criteria included in the request. The FHIR standard provides encodings for responses as either JSON (`application/fhir+json`) or XML (`application/fhir+xml`). For additional information on HTTP response codes, refer to *Exchanging Documents in FHIR* in the [CA:FeX Specifications](#).

Security Considerations

This transaction should not return information that the Data Consumer is not authorized to access. Authorization is inclusive of system, app, user, and purpose, according to local policy, patient consents, and security layering. It is essential to understand that if a jurisdiction doesn't explicitly prohibit the sharing of elements, that would not be considered "not authorized to access". It would merely be a floor describing minimal access requirements. If a jurisdiction explicitly prohibits the sharing of certain elements, that would mean access was not authorized. However, the transaction may return search result bundles that have Reference elements that the Data Consumer may not have access to. This is to say that the authorization need only be to the content returned in the Bundle. There may be references (URLs) for which the content is not authorized. This is considered proper as the Data Consumer would need to retrieve the content pointed to by those references, and at that time the proper

authorization decision would be made on that context and content. In this way it is possible for a Data Consumer to get Resources that are pointing at data that the Data Consumer is not authorized to retrieve. Thus, the URLs used must be carefully crafted so as to not expose sensitive data in the URL value. Also most of the significant resources should be included in the document, so it wouldn't be possible to strip out sensitive content, and thus the whole document should be treated as sensitive.

Note to implementers: It is the responsibility of organizations supporting APIs compliant with the specifications to ensure that the access control policies they have in place are technically realizable by the underlying software.

Retrieve FHIR Document [CA:FeX-3A]

This transaction involves a request by the Data Consumer for retrieving the identified PS-CA FHIR Document Bundle from a FHIR Repository. The desired Document Bundle is identified by the target server's record ID for that PS-CA FHIR Document Bundle. The request is received by the Data Responder which returns the requested PS-CA FHIR Document Bundle and returns an HTTP response code.

This message uses the HTTP GET request to retrieve the identified PS-CA FHIR Bundle from the central FHIR repository.

Trigger Events

This method is invoked when the Data Consumer needs to retrieve a FHIR Document Bundle.

Message Semantics

The Data Consumer sends an HTTP GET request to the server based on a known resource ID from the Data Responder. The Read operation will return a document Bundle resource containing the Patient Summary Composition and linked resources.

GET [base]/Bundle/[id]

Expected Actions

The Data Responder shall process the query and respond with PS-CA FHIR Bundle matching the specified ID included in the request. When the requested document is returned, the Data Responder shall respond with an HTTP Status Code 200. The HTTP message-body shall be the content of the requested document. For additional information on HTTP response codes, refer to *Exchanging Documents in FHIR* in the [CA:FeX Specifications](#).

Security Considerations

This transaction should not return information that the Data Consumer is not authorized to access.

9 Privacy & Security Guidance

9.1 Privacy Considerations

Infoway has developed a privacy primer, *Privacy as an Enabler*, that provides an introduction to interoperability, an overview of Canadian privacy laws and some practical approaches to privacy for interoperability. It delves into the role privacy plays in the creation of interoperable health systems. It addresses the myth that privacy laws mean patient data can't be shared. The primer outlines how privacy laws enable the sharing of patient data by providing guidance on how to share health data safely, with a patient's consent, and the responsibilities of both parties when patient information is shared.

Download the privacy primer here: [Privacy as an Enabler: Sharing Personal Health Information for Interoperability Primer](#).

9.2 Security Considerations

It is recommended that vendors and jurisdictions ensure appropriate security services, mechanisms and functionality are in place for the PS-CA Specifications, depending on maturity levels of current capabilities. For example, security considerations include the following:

- Authorization
- Authentication
- Role-Based Access Control
- Data Encryption
- Segregate Duties
- Audit Logging
- Security Labels
- Digital Signatures
- Communication
- Narrative

10 Information Models, Application, and Infrastructure

This table provides key implementation guidance for Information Models, Applications and Infrastructure for the PS-CA specifications.

Information Models: Information models are widely used to express structure and process resulting in data interchange formats and behaviours.

Application: Functional specifications are laid down at the Information level. These form the basis for the technical specifications, which are described at the Application level. At this level, agreements have to be made within both the PS-CA Producer and PS-CA Consumer regarding the integration of various applications between which information is exchanged.

Infrastructure: Infrastructure refers to the communication between systems in the different healthcare organizations. Agreements are defined between PS-CA Solutions and jurisdictions on the design of the infrastructures, databases, networks, exchange protocols, tokens and other technologies.

Categories	Concept	Implementation Guidance Description
Information Models	PS-CA: Data Domains of Interest by Canadian Jurisdiction and Release	<p>The Preface includes a table representing the:</p> <ul style="list-style-type: none"> • alignment of the PS-CA to the IPS-UV, • data domains of interest by the participating Canadian jurisdictions (including Manitoba (MB), according to their Home Clinic Client Summary Service). Note that although a PT may have identified interest in a particular data domain, they may choose to prioritize which data domains to include according to their individual Patient Summary roadmaps; and • data domains included in each PS-CA version.

Categories	Concept	Implementation Guidance Description
Information Models	Valuesets	<p>Data residing in a clinical system will need to be mapped to appropriate FHIR profiles and Valuesets from the Content Data Model of the PS-CA specification in Release 1. Valuesets define the possible choices of coded concepts for a data element within a PS-CA. The concept domains often serve the function of a predicate to be tested. In any clinical setting, implemented systems usually host many Valuesets.</p> <p>Valuesets are often localized, which makes semantic interoperability between systems difficult without extensive cross-mapping. Infoway is working with Canadian jurisdictions to identify suitable pan-Canadian valuesets that promote the use of standard terminologies (e.g., SNOMED CT) for exchange of patient summaries in Canada.</p> <p>The PS-CA specification also encourages global interoperability where possible for international exchange. Valuesets that have been defined by the HL7® FHIR® Base Standard or by the IPS Specification for the purposes of interoperable international exchange can also be found within this specification.</p> <p>Given these goals, this guide employs a number of profiling mechanisms to note terminologies in use in the jurisdictions and facilitate the implementation of standardized terminologies in use nationally and globally. For more information on the Valueset implementation patterns, please refer to the Terminology Approach page in the pan-Canadian Patient Summary FHIR Implementation Guide.</p>
Application	Patient Summary References (e.g., Patient Identity)	<p>The PS-CA Solution (e.g., EMR, EHR) will leverage their existing product standards and policies for identifying the patient/subject of care. However, if there is a central service available for patient identity, then the PS-CA Solution can leverage those services for uniquely identifying the patient/subject of care. For more information on the patient identity implementation patterns, please refer to the IHE Profile PDQm and PMIR in the Appendices.</p>
Application	Render to Specific Format (e.g., PDF, CDA)	<p>It is recommended that the PS-CA Solution leverages the CA:FMT Interoperability Specifications that provides formatting support service. It provides support for transformation of documents between different formats (e.g., from FHIR to PDF, CDA, etc.).</p> <p>Content is in development and will be added in future roadmaps.</p>

Categories	Concept	Implementation Guidance Description
Application	Data Interchange Format	<p>JSON is the recommended data interchange format for the implementation of the PS-CA interoperability use cases.</p> <ul style="list-style-type: none"> The server actors (PS-CA Recipient and PS-CA Responder) are required to support JSON and XML. The client actors (PS-CA Producer and PS-CA Consumer) can use either JSON or XML.
Application	Data Conversion / Structured Data	<p>The PS-CA should be a FHIR Document (meaning that it is authored and assembled using FHIR). For scenarios where the implementation requires the delivery of the document in a different form (e.g., PDFs), jurisdictions should use conversion and translation services that can convert FHIR Documents.</p>
Application	On-Demand	<p>Refers to the capability to generate a patient summary at the time it is requested. This means retrieving a patient's most current health data from available sources (e.g., CDR, EHR) when needed, ensuring timely access to information for clinical decision-making and patient care.</p>
Infrastructure	Jurisdictional Infrastructures	<p>Integration of the recommended actors and transactions of the PS-CA standard into existing jurisdictional healthcare infrastructures may differ; therefore, it is highly recommended that local implementation guidance is reviewed prior to the implementation of the PS-CA standard.</p> <p>Example: For user authentication, Alberta uses certificate-based security footprint while Ontario uses token-based security.</p>
Infrastructure	Document Management	<p>Implementation of the PS-CA standard must refer to jurisdictional specific requirements and policies for document management, including archiving, replacement, etc.</p>

11 PS-CA Content Data Model & FHIR® Profiles

The FHIR® Artifacts (Profiles, ValueSets, Extensions, etc.) of the PS-CA Specifications are presented in the [PS-CA Simplifier FHIR Implementation Guide](#).

As this is an evolving specification that is being updated as feedback is acquired from various engagement activities, the profiles use a versioning system to help implementers understand their development status prior to each release of the PS-CA Specifications.

The PS-CA Simplifier FHIR IG acts as a snapshot in time of the profiling and conformance expectations of PS-CA Interoperability Specifications. This will allow for [evolution of profiles](#) to prepare for future releases of the PS-CA, without undermining the stability of the released profiles. Instructions on how to access and use the specification package will be provided.

The list of summary sections within the Patient Summary-CA Composition and their respective profiles can be found in the [PS-CA Library of Profiles](#). Implementers are encouraged to begin by reviewing the PS-CA Library of Profiles page which describes the Patient Summary Composition Structure & Profiles (e.g., sections that make up the data model content for the PS-CA).

Additional information on the PS-CA FHIR® Profiles can be found in the [pan-Canadian Patient Summary – FHIR Implementation Guide](#)