



Canada Health Infoway

Projectathon Profile Overview

Canadian Network Security (CA:Sec)

Tib Onu

Senior Solutions Architect

What is Canadian Network Security (CA:Sec)?



- ❖ The CA:Sec (Canadian Network Security) Implementation Guidance specifies the foundational elements needed to securely execute transactions between two systems.
- ❖ It is based on the ATNA (Audit Trail and Node Authentication) IHE profile and aims to bring improvements via loose coupling, and high cohesion, with focus on secure communication.

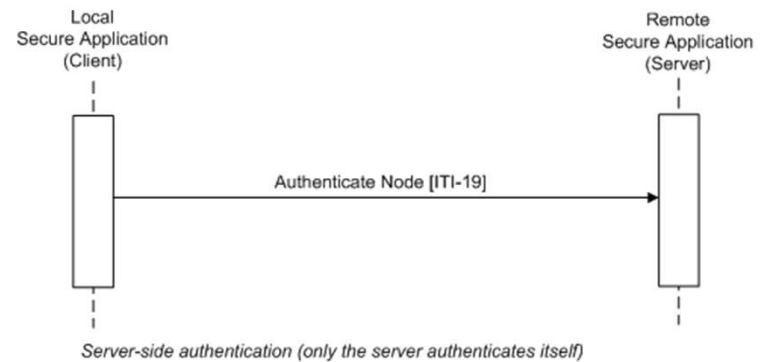
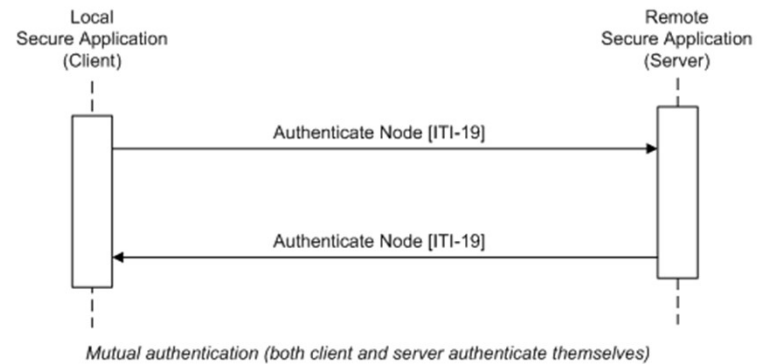
CA:Sec Actors and Transactions



CA:Sec Actor:

- Secure Application

To learn more about CA:Sec, go [here](#).



Canadian Implementation Guidance



- ❖ TLS Floor option: using TLS 1.2 or higher
- ❖ Suite of recommended cyphers with encryption keys longer than 128 bit
- ❖ FQDN Validation of Server certificates option



Canada Health Infoway



Thank you!

To learn more about the Projectathon 2023, visit:

<https://infoscribe.infoway-inforoute.ca/display/PCI/Projectathon+March+2023>

Contact Information:

interoperability@infoway-inforoute.ca

VISIT OUR WEBSITE
infoway-inforoute.ca

VISIT OUR SURVEY WEBSITE
insights.infoway-inforoute.ca/

LET'S CONNECT ON LINKEDIN
[linkedin.com/company/canada-health-infoway/](https://www.linkedin.com/company/canada-health-infoway/)

LET'S CONNECT ON TWITTER
[@infoway](https://twitter.com/infoway)