



**Canada Health Infoway**

# **Projectathon Profile Overview**

Mobile Access to Health Documents (MHD)

Tib Onu

Senior Solutions Architect



# What is Mobile Access to Health Documents (MHD)?

- ❖ The Mobile Access to Health Documents (MHD) Profile defines one standardized interface to health document sharing. This profile is applicable to systems where needs are simple, such as pulling the latest Patient Summary for display.
- ❖ The following are examples of environments which may choose the MHD Profile:
  - ❖ Medical devices such as those targeted by the Patient Care Devices (PCD) domain or Continua organization, submitting data in the form of documents.
  - ❖ Kiosks used by patients in hospital registration departments, where it is anticipated that a hospital staff member will review, edit, and approve the document before it is allowed into the hospital system.
  - ❖ PHR publishing into a staging area for subsequent import into an EHR or HIE.
  - ❖ Patient or provider application that is configured to securely connect to a PHR in order to submit a medical history document. (For example BlueButton+)
  - ❖ Electronic measurement device participating in an XDW workflow and pulling medical history documents from an HIE.
  - ❖ A General Practitioner physician's office with minimal IT capabilities using a mobile application to connect to an HIE or HER
- ❖ For the purpose of the upcoming Projectathon, documents exchanged using MHD transactions will be FHIR Patient Summary documents

# Profile Actors and Transactions

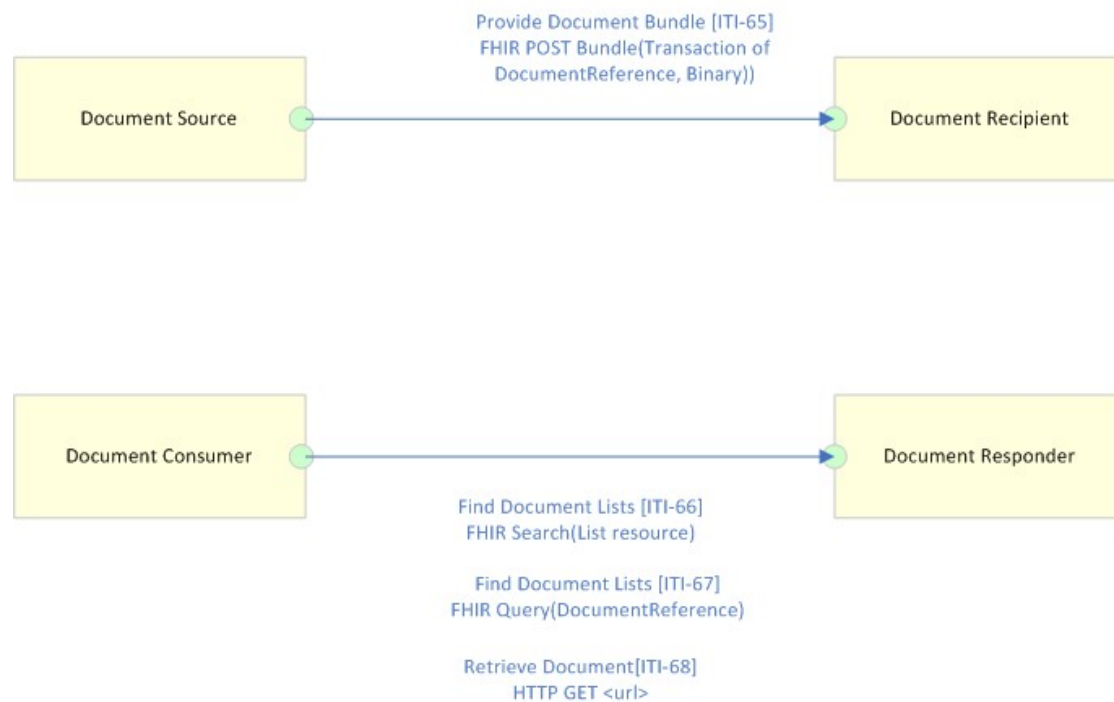
MHD – Mobile Access to Health Documents



## MHD Profile Actors:

- Document Source
- Document Recipient
- Document Consumer
- Document Responder

To learn more about MHD, go [here](#).



# No-peer Testing Tools



<https://infoscribe.infoway-inforoute.ca/display/PCI/Test+Tools+and+Training%3A+Projectathon+2023>



**Canada Health Infoway**



# Thank you!

**To learn more about the Projectathon 2023, visit:**

<https://infoscribe.infoway-inforoute.ca/display/PCI/Projectathon+March+2023>

**Contact Information:**

[interoperability@infoway-inforoute.ca](mailto:interoperability@infoway-inforoute.ca)

**VISIT OUR WEBSITE**  
[infoway-inforoute.ca](http://infoway-inforoute.ca)

**VISIT OUR SURVEY WEBSITE**  
[insights.infoway-inforoute.ca/](http://insights.infoway-inforoute.ca/)

**LET'S CONNECT ON LINKEDIN**  
[linkedin.com/company/canada-health-infoway/](https://www.linkedin.com/company/canada-health-infoway/)

**LET'S CONNECT ON TWITTER**  
[@infoway](https://twitter.com/infoway)