

# UC:02: Implementation Option 2: CA:FeX

**Scenario:** Clinical Solution A Retrieves Patient Summary-CA from Document Repository

**Assumption:** Patient Summary-CA is stored in Central Document Repository

**Implementation Option 2:** This sequence diagram provides the option of using the CA:FeX Interoperability Specifications that provide support for saving and retrieving a Patient Summary-CA to and from a Document Repository (Local to PS-Producer or Central). This profile includes a Data Consumer and a Data Responder actor. Additionally, this sequence diagram uses the 'Search Data' and 'Retrieve Data' FHIR operations.

Note: Additionally, this sequence diagram include the CA:FMT Interoperability Specifications that handle transformations to and from various formats (e.g. FHIR to PDF, CDA, etc). Additional details will be included in the PS-CA Interoperability Specifications.

## Sequence Diagram Overview:

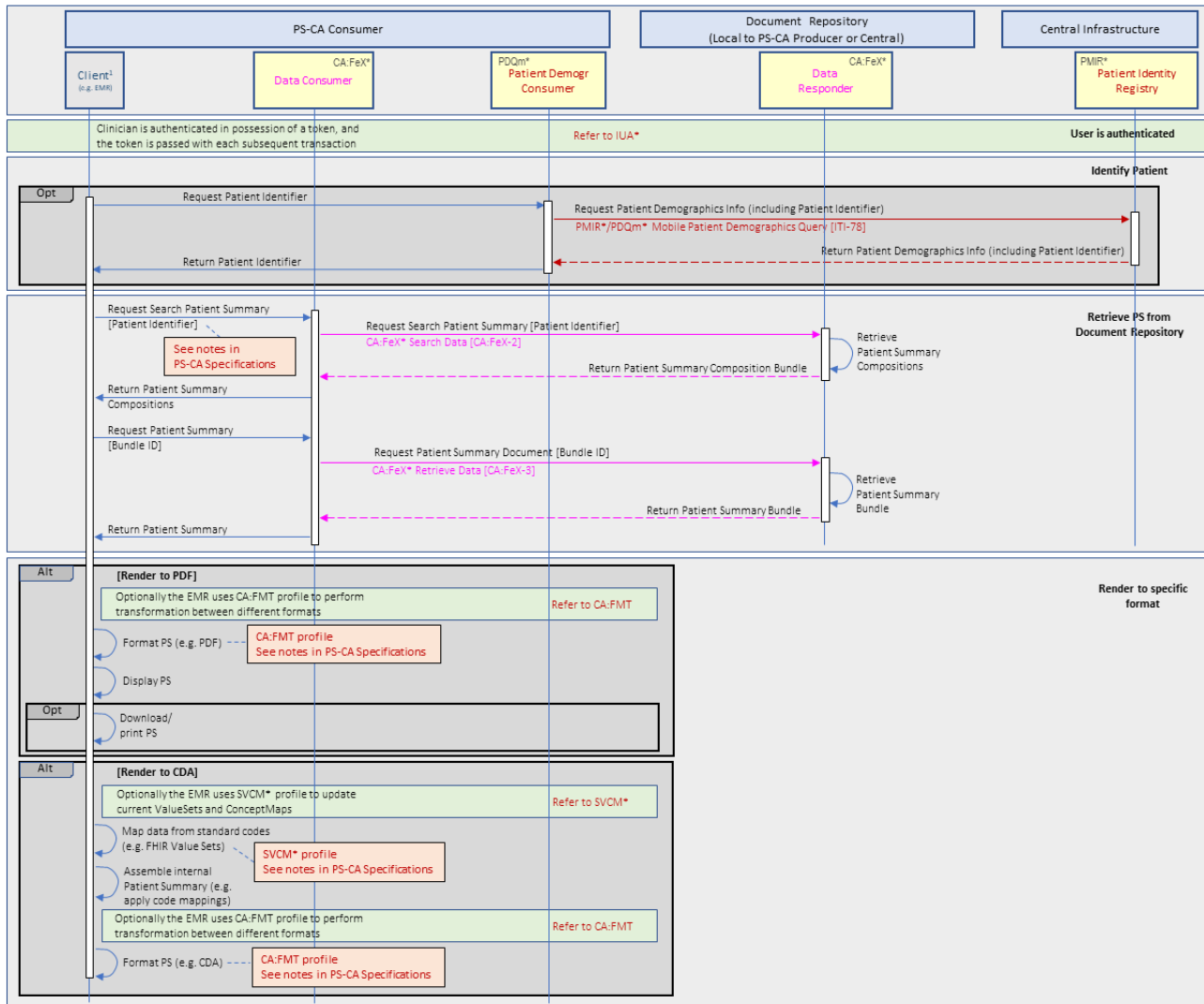
Below provides guidance on how to read the sequence diagram:

- This sequence diagram illustrates how the different standardized actors of systems should interact with each other to carry out specific standardized transactions, and the order in which the transactions and interactions occur when Use Case 2 of the Patient Summary-CA is executed.
- The legend on the bottom right corner describes the different system components, actors and transactions that are necessary to carry out this particular use case.
- The green swim lane is a simplified view of the actors and transactions required by the Foundational IHE Profiles, in addition to the other ones that are not explicitly illustrated on the diagram (e.g. ATNA, CT) but included as a white note. These are pre-requisite conditions for this particular use case and it is assumed that these will be satisfied.
- The blue swim lanes groups sequence of processes (along with their required actors and transactions) that are needed to occur to satisfy this particular use case. These are to be read from left to right and top to bottom.
- The red note boxes describe important call outs, information and notes that provide more context for the sequence diagram.
- This sequence diagram includes the CA:FeX Interoperability Specifications and CA:FMT Interoperability Specifications. Additional details will be included in the PS-CA Interoperability Specifications.
- More information about those details of the Foundational IHE Profiles can be found [here](#).

## UC-02 HCP Views/Consumes PS-CA – CA:FeX

### Clinical Solution A Retrieves PS from Document Repository

PS is stored in Document Repository (Local to PS-CA Producer or Central)



#### Footnotes

1. Examples of the client system can be any of the following: EMR, HIS, CIS, PHR, or EHR

#### Prerequisites

Client is logged into the system (IUA\*)  
Client obtained a valid access token from the Authorization Server that is used with each transaction (IUA\*)  
All communication is done through secure channels (ATNA)  
System time is synchronized among all components (CT)

#### Legend

